



LEADING THE RECYCLING ECONOMY,
INNOVATIVE ENERGY-SAVING EMISSION REDUCTION!



www.Oldlang.cn
Oldlang_sale@163.com

5G1U Miniature Circuit Breaker and Smart Metering & Control Module



 **Gold Supplier**  Trade Assurance  TrustPass
[Http://Smartelectrical.en.Alibaba.com](http://Smartelectrical.en.Alibaba.com)
[//Oldlang.en.Alibaba.com](http://Oldlang.en.Alibaba.com)
Alibaba.com





5G1U Miniature Circuit Breaker and Smart Metering & Control Module



Innovative Energy-Saving Emission Reduction
Leading The Recycling Economy

www.Oldlang.cn
Oldlang_sale@163.com

About Oldlang Smart Electrical

The company named Oldlang Smart Electrical, which is a modern technology enterprise, committed to innovating energy conservation and emission reduction and leading the circular economy. The products focus on the original, low carbon, energy saving, collecting data, remote control and other functions are the characteristics of Oldlang's Smart electrical products. To enable users to use energy safely, reliably and efficiently is the value idea of Oldlang Smart Electrical. Therefore, the intelligent energy management is not only the inevitable development of the times, but also the direction of the development of the intelligent electrical of Oldlang's. Oldlang Smart Electrical provide wisdom into the city, the intelligent household practical products, improve people's life, improve the earth's environment, insist on sustainable development has always been the belief of Oldlang Smart Electrical.

In Oldlang smart electrical, we are always advocating:

INNOVATIVE ENERGY-SAVING EMISSION REDUCTION  LEADING THE RECYCLING ECONOMY!





B5G1U-63 Miniature Circuit Breaker



Scope of application

B5G1U series circuit breakers for equipment are suitable for overload and short circuit protection of circuits in electrical systems with rated current 1A to 63A, rated voltage AC230V or DC60V or DC80V and up to. They can also be used for infrequent connection and disconnection.

Widely used in computer and its peripheral equipment, industrial automatic makeup, telecommunication equipment, communication power supply, communication room or cabinet, and UPS equipment, railway locomotives, Marine electrical system, elevator control system and mobile power supply equipment.

Normal working environment

- Elevation: $\leq 2000\text{m}$
- Ambient temperature: $-40^{\circ}\text{C} \sim +70^{\circ}\text{C}$, the reference setting temperature is $+40^{\circ}\text{C}$
- Can withstand the influence of humid air (temperature $+40^{\circ}\text{C}$ and above, the relative humidity of the air does not exceed 50%, at lower temperatures can allow greater relative humidity, such as 95% at $+20^{\circ}\text{C}$)
- Can withstand salt spray for 48 hours
- Where there is no explosion hazard in the medium, and the medium is free of gases and conductive dust sufficient to corrode metals and destroy insulation
- Where there is no rain or snow

Installation

Plug-in type, rear end plug copper bar thickness $2 \pm 0.1\text{mm}$.

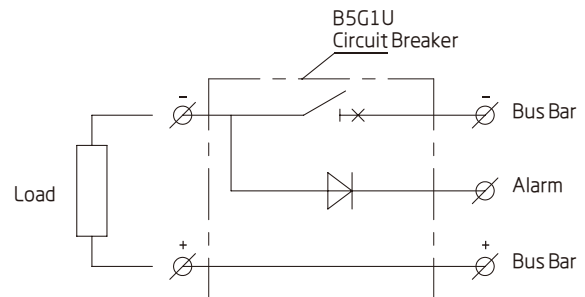
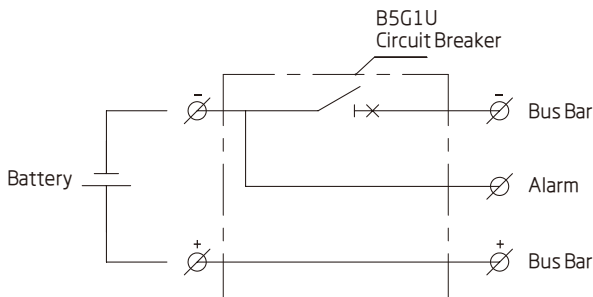
The packing storage

Should be stored in the air circulation and relative humidity is not more than 80%, temperature is not higher than $+80^{\circ}\text{C}$, not less than -40°C warehouse. Store in a warehouse free of acid, alkaline or other corrosive gases in the surrounding air. Under the above conditions, the storage period shall not exceed 1 year from the production date.

Environmental compliance

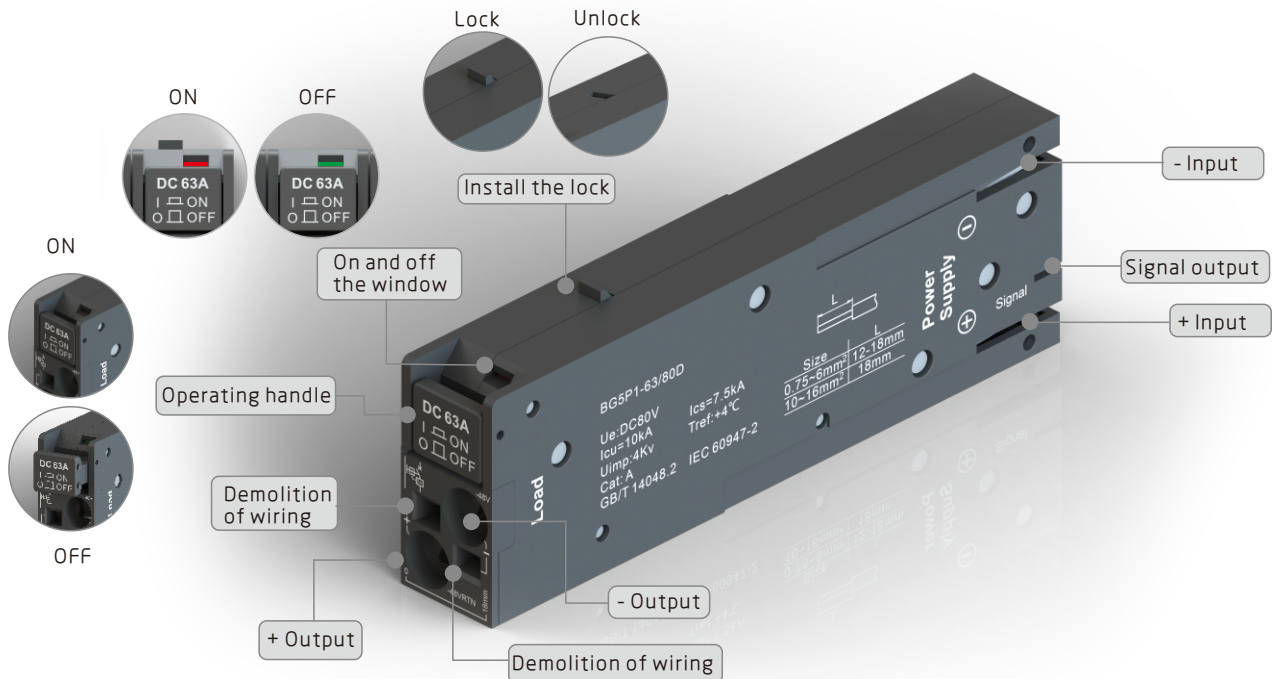
Product design to meet RoHS requirements.

Wiring schematic diagram





B5G1U-63 Miniature Circuit Breaker



Technical parameters

Rated Voltage U _e :	60VDC, 80VDC, 230VAC, 415VAC
Rated Current I _n :	1A to 63A
Rated Insulation Voltage U _i :	500V
Rated Shock Withstand Voltage U _{imp} :	4kV
Insulation Resistance:	At 500VDC, minimum 100 mehm
Power Frequency Withstand Voltage:	AC test voltage 1890V, 5S, if special requirements can be negotiated with the manufacturer.
Pollution Level: Z:	2
Applicable environment:	A

Resistance/Impedance:

Rated current (A)	L pole internal resistance	N pole internal resistance
1	≤1.66Ω	≤1mΩ
2	≤445mΩ	≤1mΩ
5	≤70mΩ	≤1mΩ
10	≤22mΩ	≤1mΩ
16	≤7mΩ	≤1mΩ
20	≤5mΩ	≤1mΩ
30	≤4mΩ	≤1mΩ
32	≤4mΩ	≤1mΩ
40	≤3.5mΩ	≤1mΩ
50	≤2.5mΩ	≤1mΩ
63	≤2.5mΩ	≤1mΩ

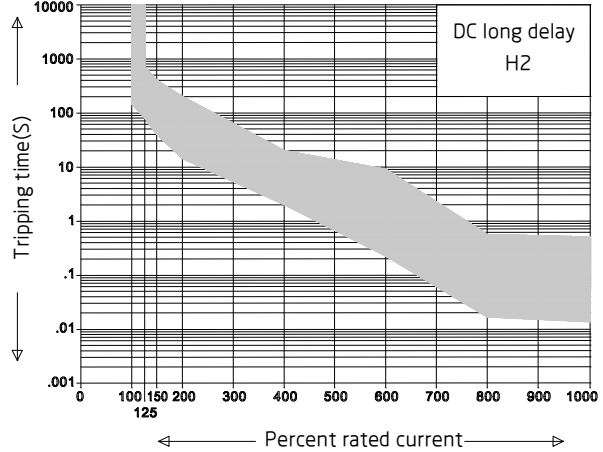
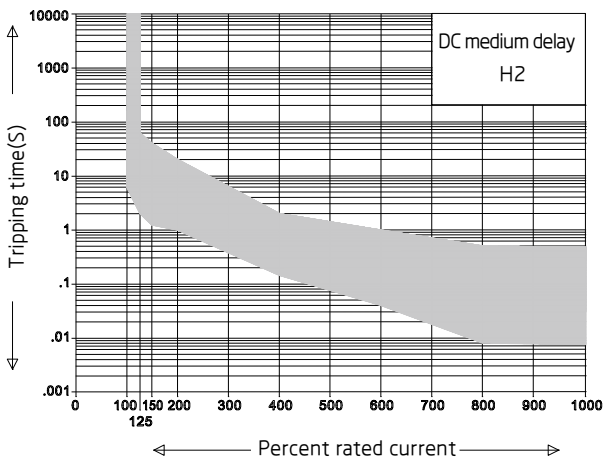
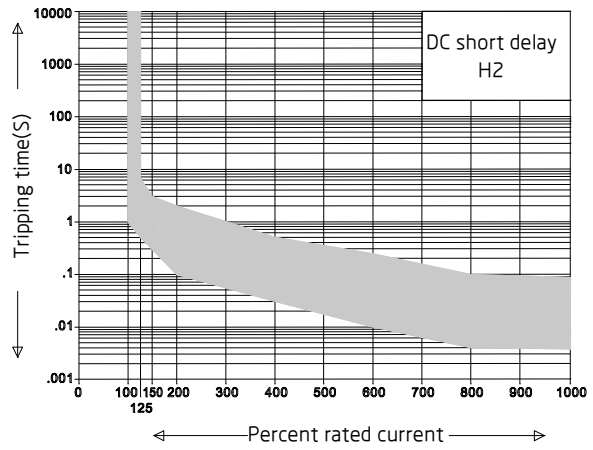
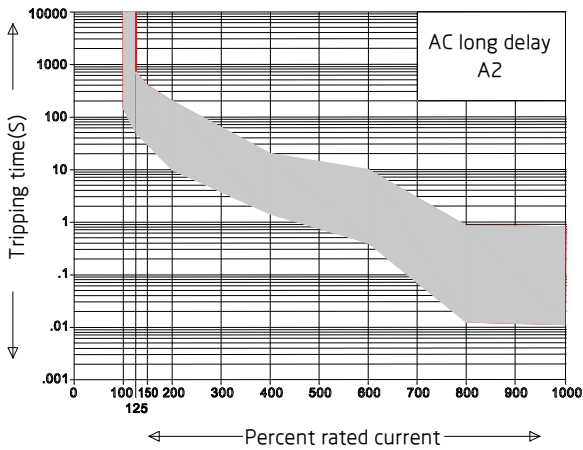
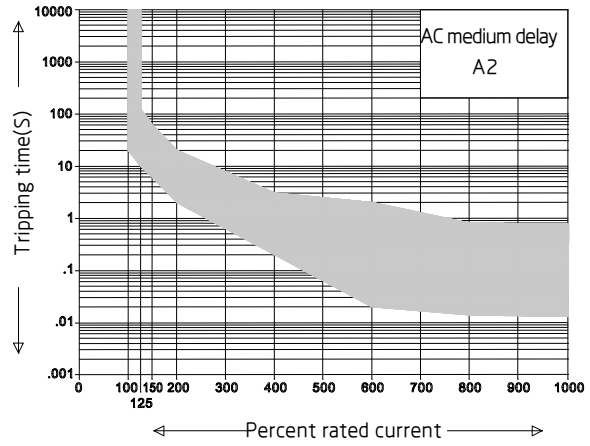
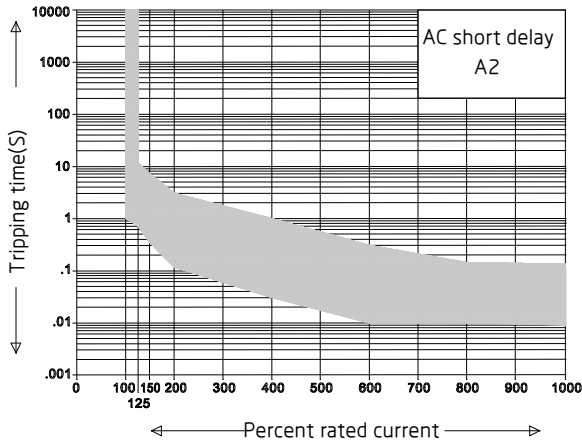
Lightning strike requirements:	8/20 us surge current pulse, first 10kA positive and negative 5 times each, then 15kA positive and negative 5 times each, the interval between the two shocks is 60 seconds; After the test, the appearance of the product is normal, without cracking and overload characteristic is normal.
Life:	Mechanical life 10000 times, including electrical life 6000 times at rated current and voltage.
Free trip:	When overloaded, even if the operator is forced to remain in the ON position, the circuit breaker is tripped internally.
Tripping instruction:	When overloaded, the operator pops out, and the normal energized closing is a push-in type.
Working environment:	-40°C to +85°C.
Installation requirements:	Bottom quick mounting clip insert connection.
Pol.:	1P, 2P, 3P, 4P
Weight:	approx. 135g/pole
Standards:	GB/T 14048.2 / IEC 60947-2.





B5G1U-63 Miniature Circuit Breaker

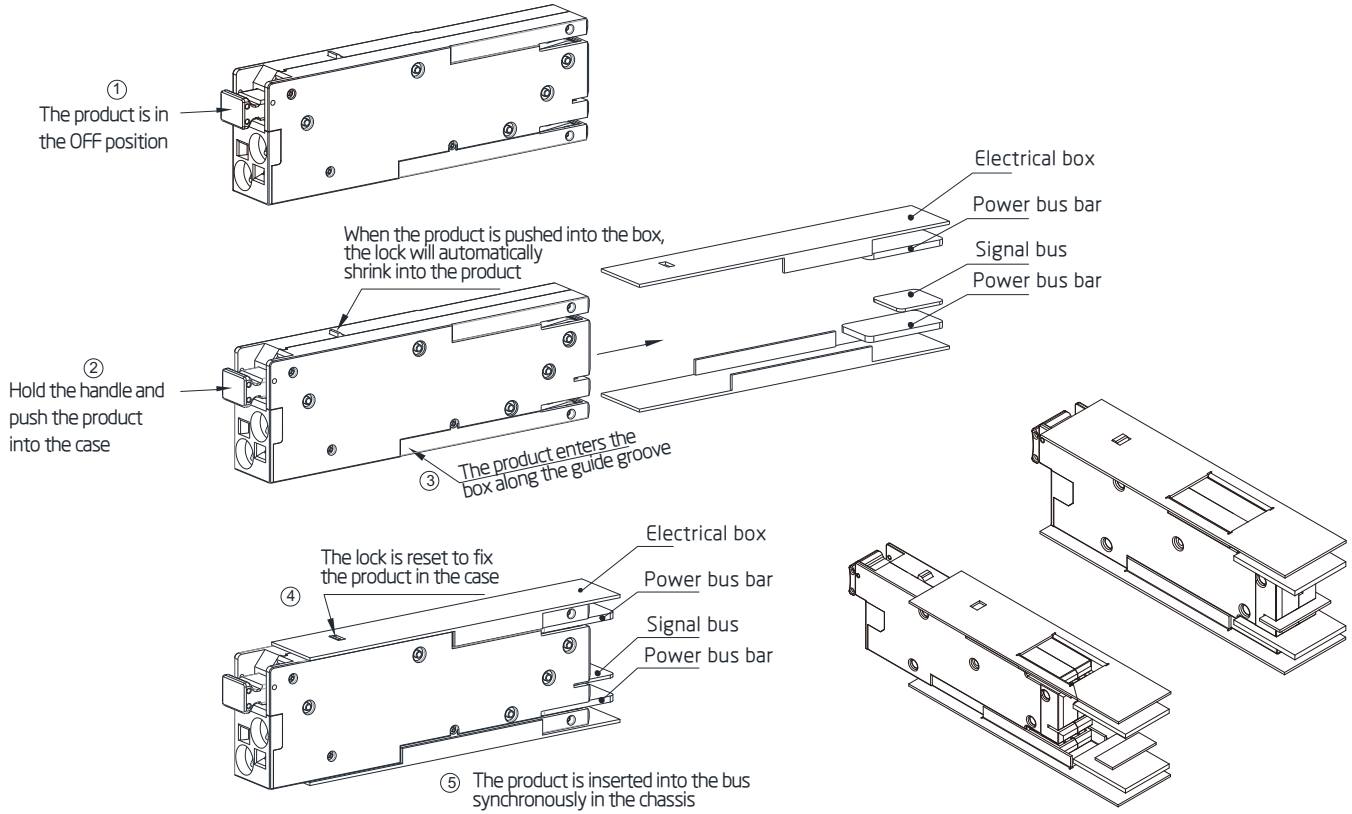
Delay curve



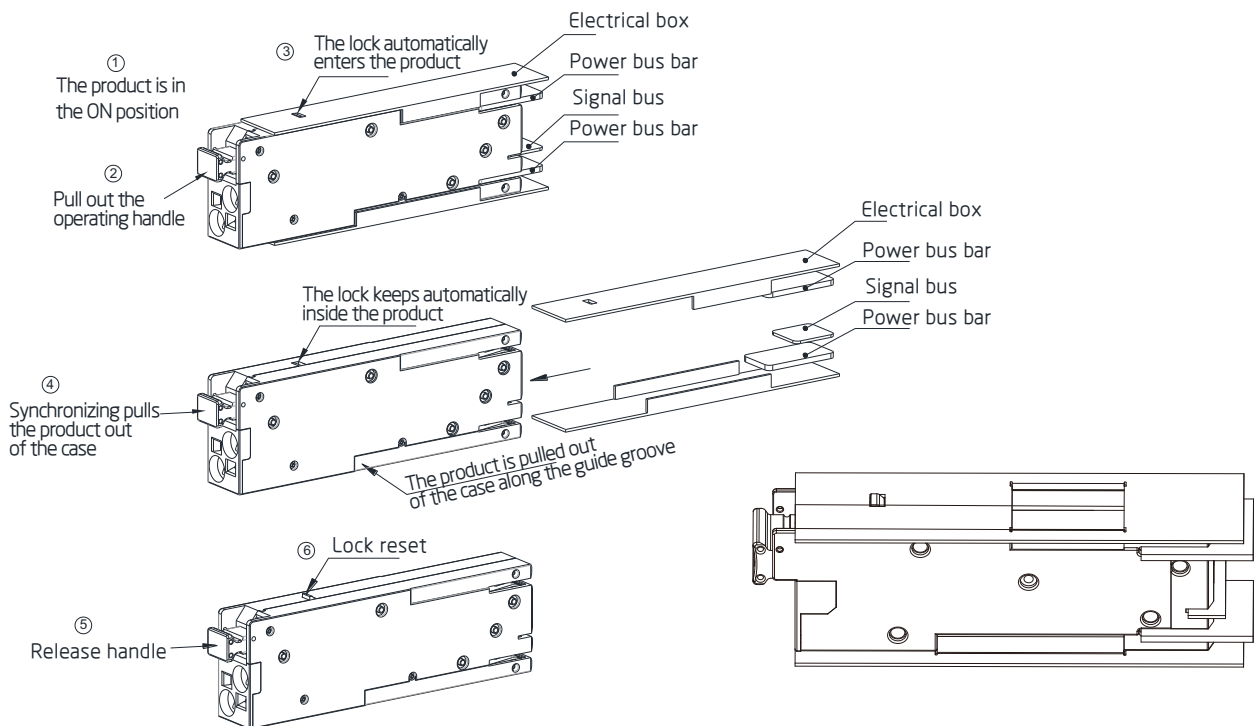


B5G1U-63 Miniature Circuit Breaker

Installation



Demolition





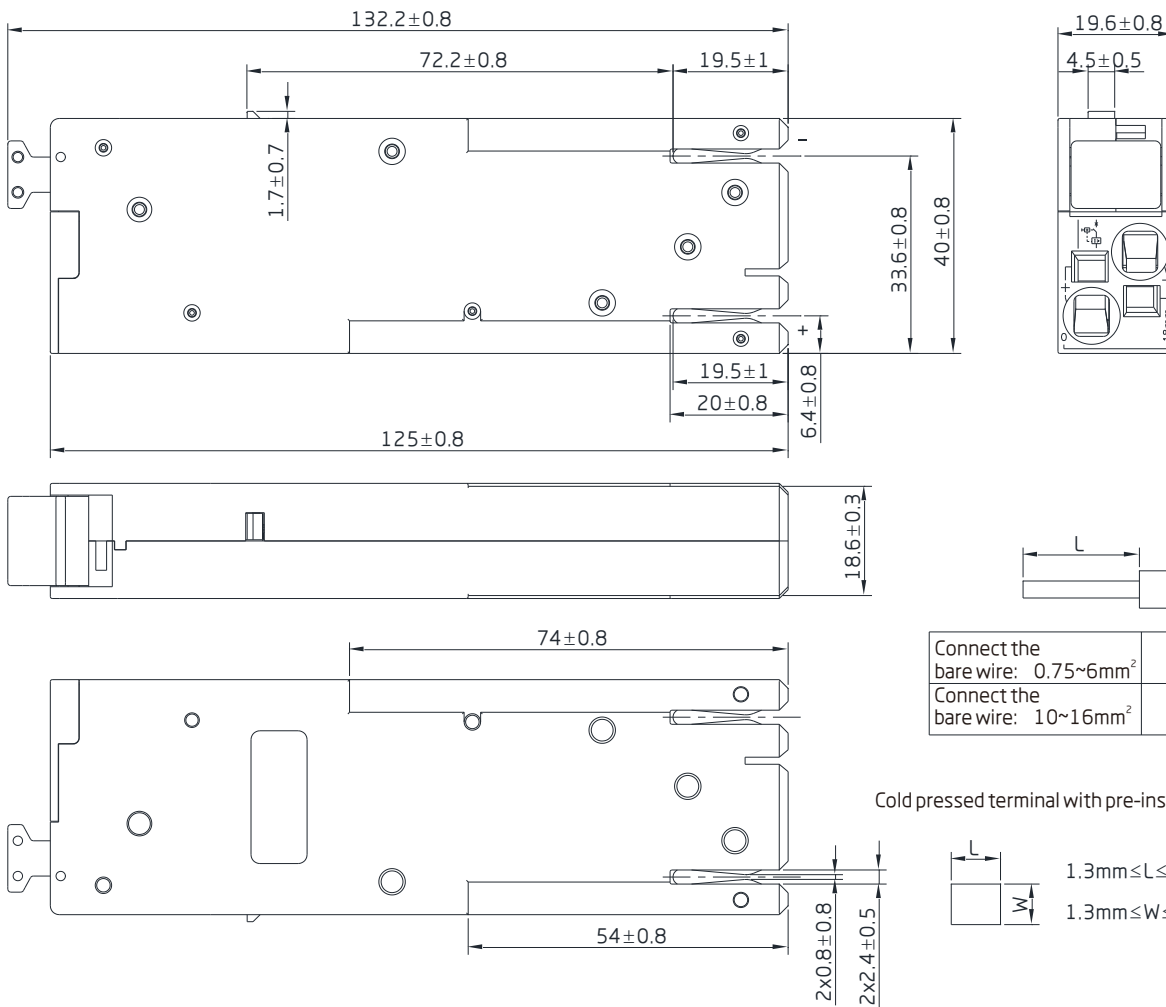
B5G1U-63 Miniature Circuit Breaker

Weight (g)

B5G1U-63	
Type	B5G1U-63
1P+N	135

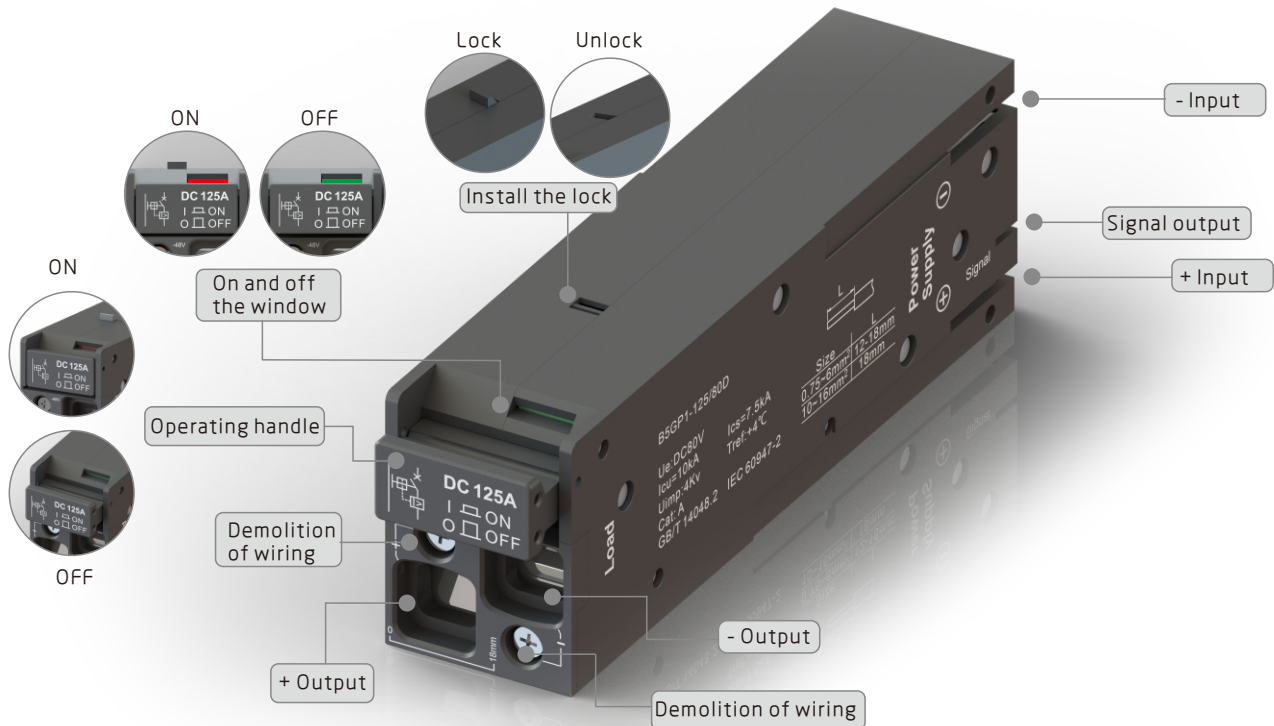
Outline Size And Connection Diagram (mm)

B5G1U-63	
Undimensioned tolerance	Mounting hole size tolerance
< 1mm:±0.2mm	±0.4mm
1~5mm:±0.3mm	
> 5mm:±0.5mm	





B5G1U-125 Miniature Circuit Breaker



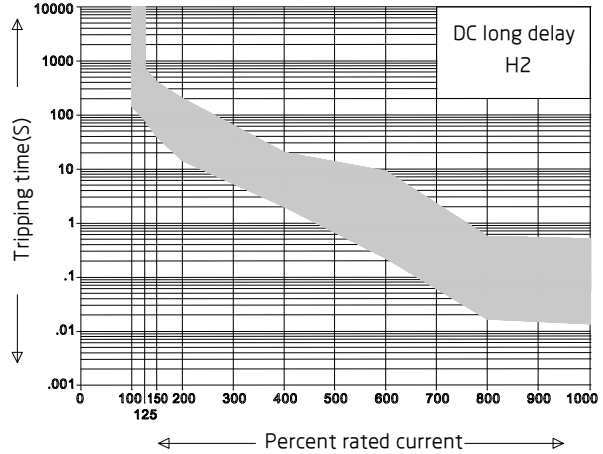
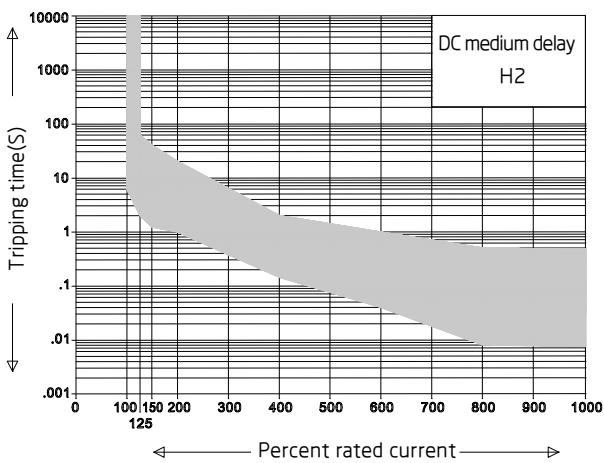
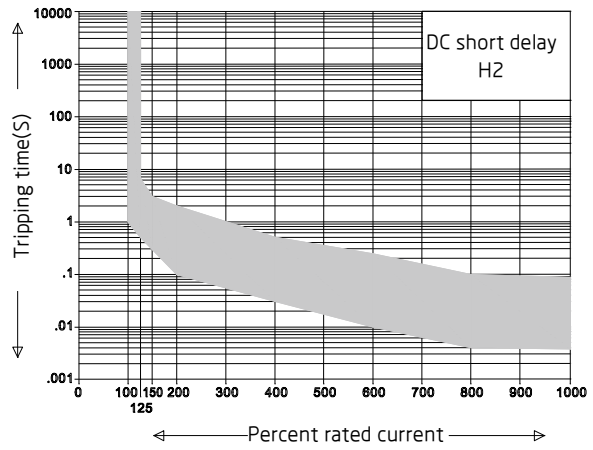
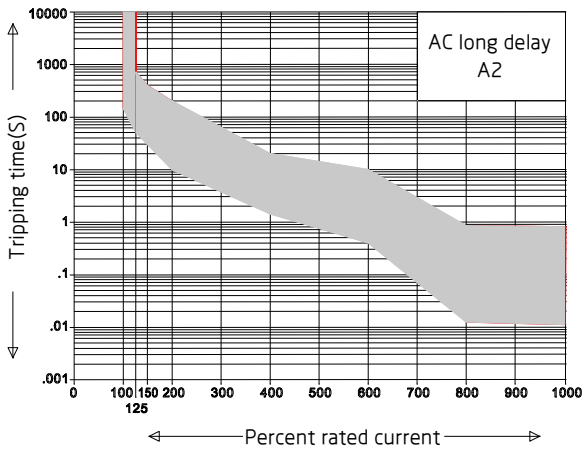
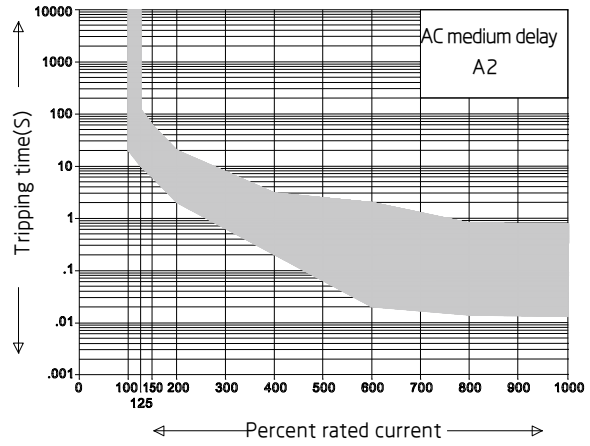
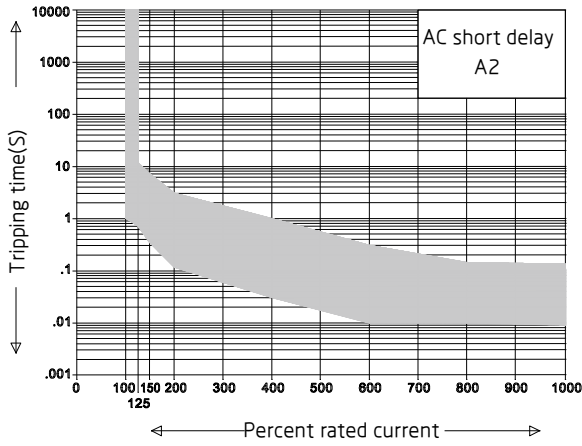
Technical parameters

Rated Voltage U_e :	60VDC, 80VDC, 230VAC, 415VAC
Rated Current I_n :	1A to 125A
Rated Insulation Voltage U_i :	500V
Rated Shock Withstand Voltage U_{imp} :	4kV
Insulation Resistance:	At 500VDC, minimum 100 mehm
Power Frequency Withstand Voltage:	AC test voltage 1890V, 5S, if special requirements can be negotiated with the manufacturer.
Pollution Level: Z:	2
Applicable environment:	A
Lightning strike requirements:	8/20 us surge current pulse, first 10kA positive and negative 5 times each, then 15kA positive and negative 5 times each, the interval between the two shocks is 60 seconds; After the test, the appearance of the product is normal, without cracking and overload characteristic is normal.
Life:	Mechanical life 10000 times, including electrical life 6000 times at rated current and voltage.
Free trip:	When overloaded, even if the operator is forced to remain in the ON position, the circuit breaker is tripped internally.
Tripping instruction:	When overloaded, the operator pops out, and the normal energized closing is a push-in type.
Working environment:	-40°C to +85°C.
Installation requirements:	Bottom quick mounting clip insert connection.
Pol.:	1P, 2P, 3P, 4P
Weight:	approx. 135g/pole
Standards:	GB/T 14048.2 / IEC 60947-2.



B5G1U-125 Miniature Circuit Breaker

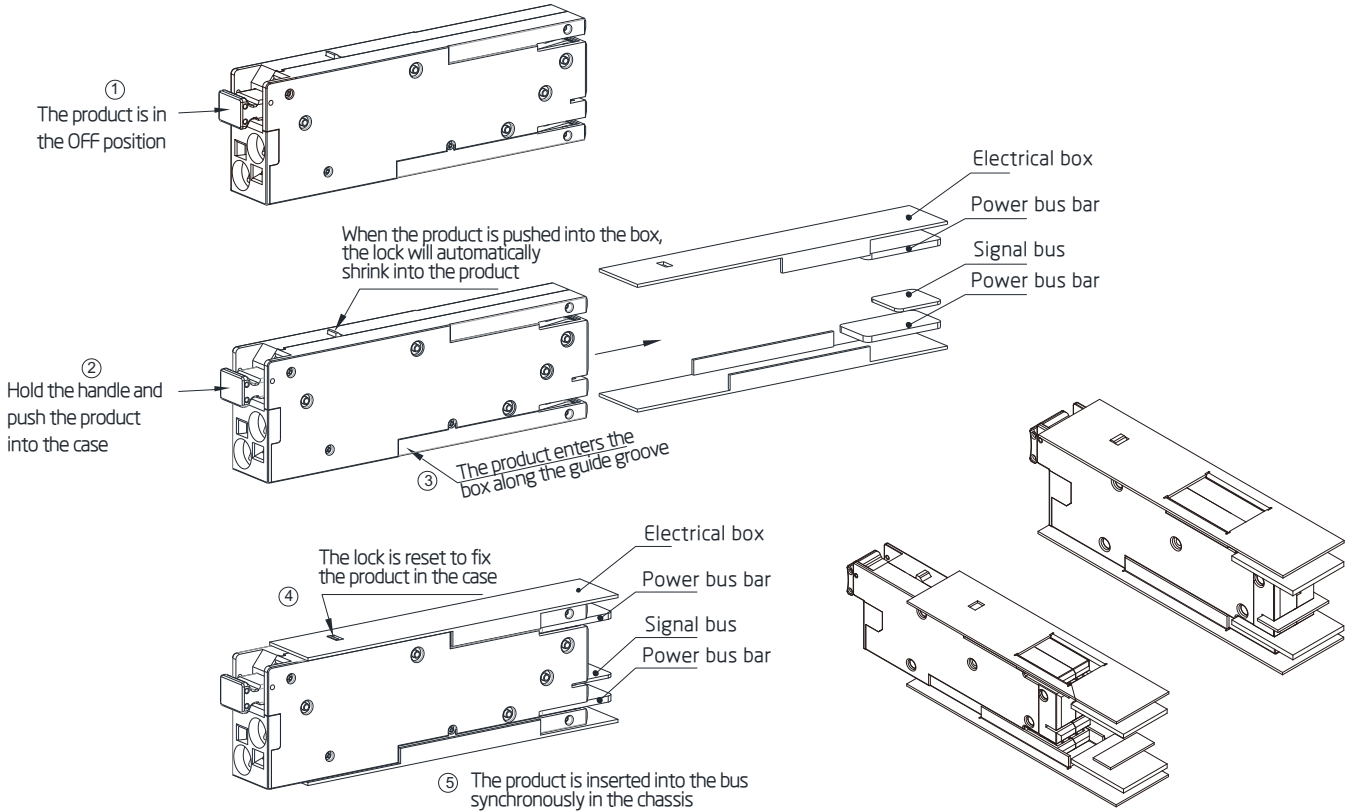
Delay curve



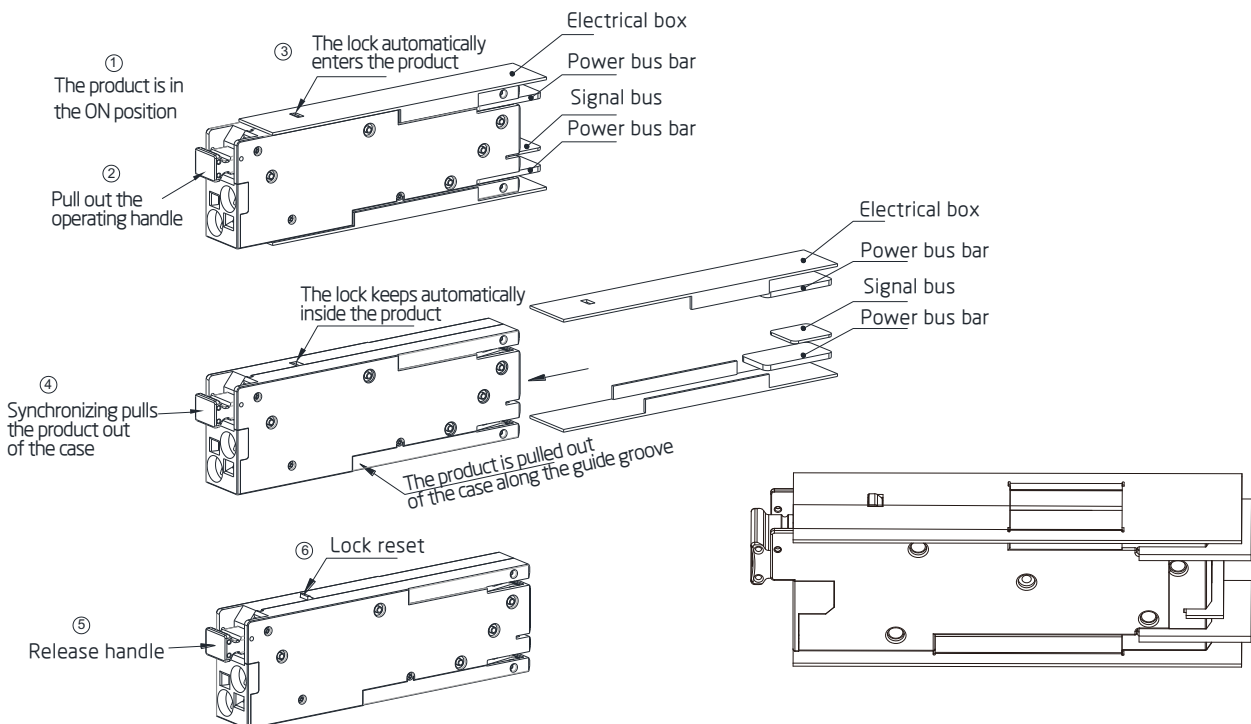


B5G1U-125 Miniature Circuit Breaker

Installation



Demolition





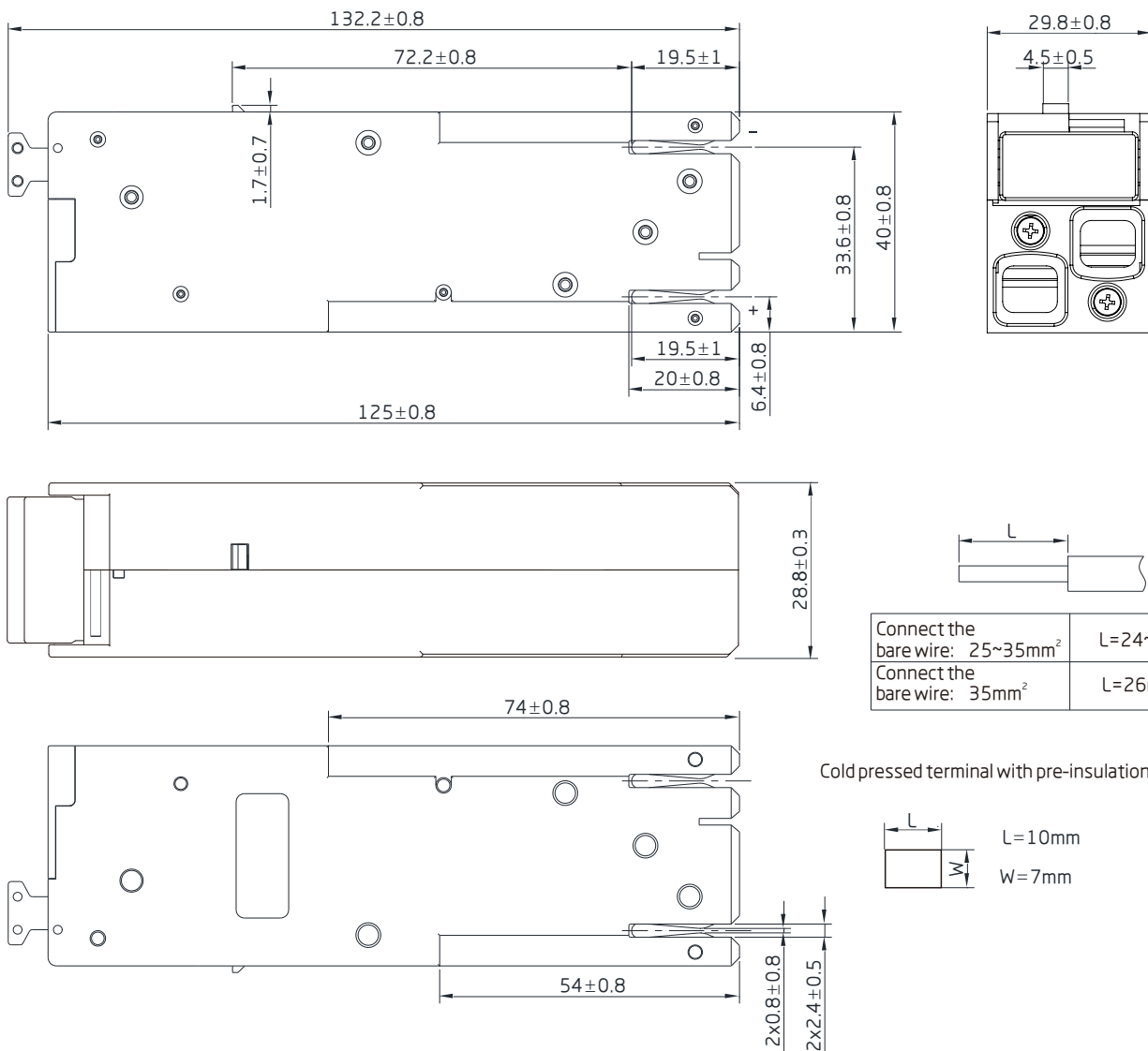
B5G1U-125 Miniature Circuit Breaker

Weight (g)

B5G1U-125	
Type	B5G1U-125
1P+N	235

Outline Size And Connection Diagram (mm)

B5G1U-125	
Undimensioned tolerance	Mounting hole size tolerance
< 1mm:±0.2mm	±0.4mm
1~5mm:±0.3mm	
> 5mm:±0.5mm	

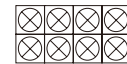
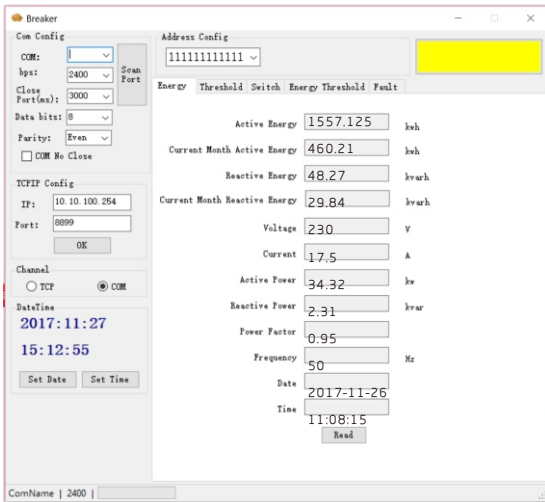




J5G1U Smart Metering & Control Module

The function of Smart electrical products

1、Acquisition measurement



RS485

1、 Measurement data:

- Active energy
- Accumulative active energy
- Reactive energy
- Accumulative reactive energy
- Voltage
- Current
- Active power
- Reactive power
- Power factor
- Frequency

2、 Accuracy of measurement:

- Voltage & current: $\pm 0.5\%FS$;
- Energy: $\pm 1\%FS$.

3、 The data is not lost for 10 years after losing electricity.





J5G1U Smart Metering & Control Module

Intelligent interconnection, remote communication



Connect cloud data
Integrated smart system
APP smart terminal



Communication: the RS-485 interface, which supports the Modbus-RTU/DTL_97 /DTL_07 protocol;
Can expand WIFI or ZIGBEE and other mobile communication.



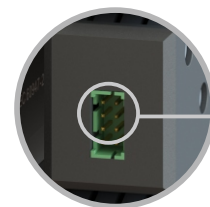
Always get all the data you need and make quick decisions and management:

Oldlang low voltage intelligent electrical performance reliable, easy installation, flexible configuration, The communication system provides Ethernet interface and Modbus interface, and has intelligent display terminal.

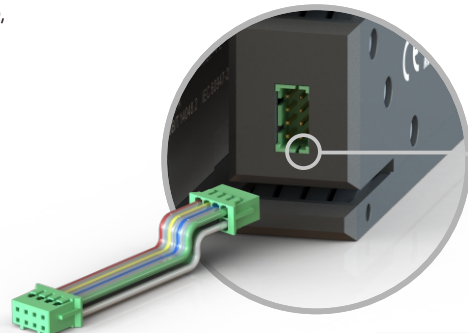
Secure transmission through efficient network:

- Modbus communication protocol is used between components in the distribution cabinet
- Use Ethernet to connect power distribution cabinets and computers in buildings (via cable or WiFi connections)
- Access to the oldlang smart electric online service at any time through broadband Ethernet or GPRS connections.

Since then, energy experts from all over the world have been able to provide advice and advice based on real-time updated building measurements.



- RS 485 Communication port
- Parameter setting and remote control



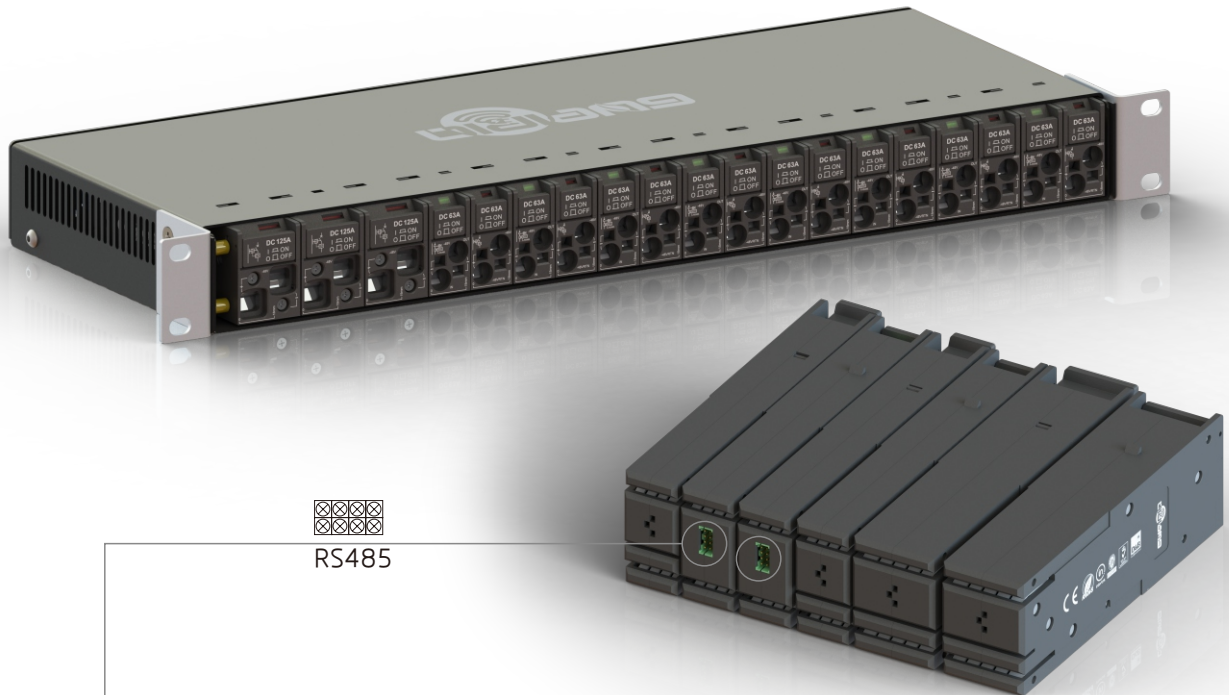
- Data wire connection
- Rapid transmission data



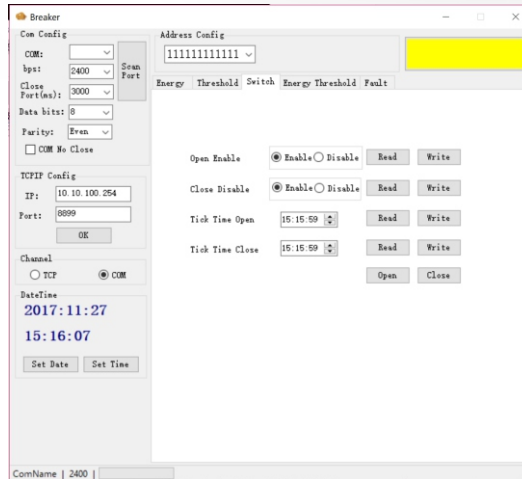
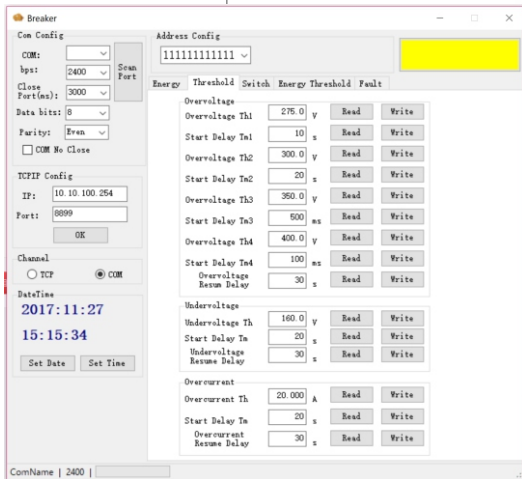


J5G1U Smart Metering & Control Module

Achieve remote control and appointment timing control



RS485



Control: manual or mobile phone, computer and other communication terminal, remote timing or irregular wireless automatic control of closing/breaking operation;

- Overload, short circuit, leakage protection
- The timing control on or off
- Remote control on or off
- To measure and monitor the electrical energy of the power equipment remotely
- Self-diagnostic information function
- Read run data

- Smart display terminal connected by Ethernet
- Display electrical network related important electrical information and alarm
- Centralized control (brake, switch, reset...) equipment
- Alarm event automatically generates email notification





J5G1U Smart Metering & Control Module

Energy conservation and emission reduction management, through energy efficiency management software

Real time monitoring

Intelligent display terminals connected via Ethernet can be centrally controlled (sluice, switching, reset..The data of various equipment and data recorded in the document is of great significance to optimize the energy consumption of buildings.

These data can help to determine whether the temperature setting range of the building management system or other automation equipment is reasonable.

Online energy management services

The energy operation management platform automatically collects information through the open and secure information system of the energy efficiency management system.

With the help of Oldlang's intelligent electrical energy efficiency management service team, the collection of information can be converted into operational information to enable customers to understand their equipment performance at any time.

The energy operation management platform can make full use of the short-term investment of the existing system of the company, and communicate the achievements and achievements to more audiences, so that the various departments of the company can form a tacit understanding.



Application value

To realize the classification, sub-item and classification of energy consumption, effectively improve energy management and property management level, and reduce operating expenses.

Through energy consumption monitoring and energy efficiency analysis, we will find the energy management loophole, make the most reasonable energy saving reform, and reduce the cost of energy expenditure.





J5G1U Smart Metering & Control Module

Main technical parameters



J5G1U

- Number of poles 1P
- Rated Current(I_n) 1、2、3、4、6、10、16、20、25、32、40、50、63、80、100、125A
- Rated Voltage(U_n) AC 230(240)V ; DC60V; DC80V
- Ultimate short-circuit breaking capacity(I_{cn}) 10000A
- Metrical data Voltage, Current, Active power, Active energy
- Metrical accuracy Voltage and current: ±0.5%FS
- Communication interface RS - 485
- Communication protocol Dt645, MODBUS RTU/DTL
- Communication rate can be set up 1200, 2400, 4800, 9600 BPS
- Operation life Protection parts: 40,000 times ; Perform control: 500,000 times
- Electrical life 20,000 times
- Stand-by power consumption 1W Max.
- Measuring precision 0.5%
- Terminal protection Ip20
- Operating temperature -25°C~+55 °C

- Electrical parameter acquisition
- Overload protection
- Overvoltage & undervoltage protection
- Timing & delay switch
- Electrical energy metering & Control
- Remote control & Data transfer





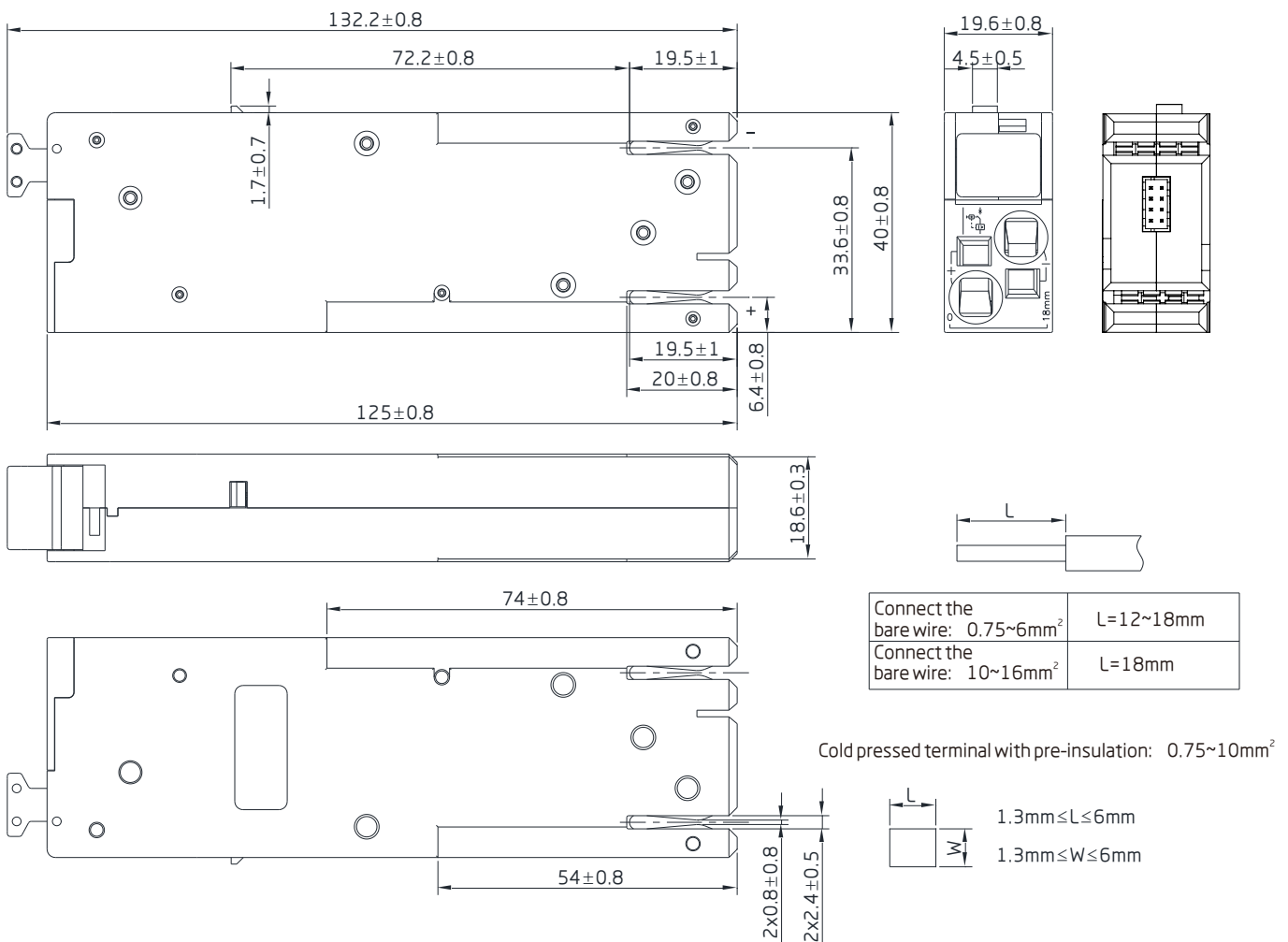
J5G1U Smart Metering & Control Module

Weight (g)

J5G1U-63	
Type	J5G1U-63
1P+N	175

Outline Size And Connection Diagram (mm)

J5G1U-63	
Undimensioned tolerance	Mounting hole size tolerance
< 1mm:±0.2mm	±0.4mm
1~5mm:±0.3mm	
> 5mm:±0.5mm	





SAVE ON ENERGY, STARTS FROM ME!



www.Oldlang.cn



Low Carbon



Interconnect



Energy Saving

E-mail: Oldlang_sale@163.com <http://www.Oldlang.cn>
Hangzhou: Future Science And Technology City / Nanjing: Gaochun Economic development zone

