



LEADING THE RECYCLING ECONOMY,
INNOVATIVE ENERGY-SAVING EMISSION REDUCTION!

Oldlang
Oldlang Smart Electrical



Photovoltaic Fuse (PV Fuse)

IEC 60269-6
GB/T 13539.6,
UL 248-19





ISO 9001



ISO 14001



OHSAS 18001

Photovoltaic Fuse

Standard : IEC 60269-6, GB/T 13539.6



Oldlang Smart Electrical

Innovative Energy-Saving Emission Reduction
Leading The Recycling Economy

www.Oldlang.com
Oldlang_sale@163.com

About Oldlang Smart Electrical

The company named Oldlang Smart Electrical, which is a modern technology enterprise, committed to innovating energy conservation and emission reduction and leading the circular economy. The products focus on the original, low carbon, energy saving, collecting data, remote control and other functions are the characteristics of Oldlang's Smart electrical products. To enable users to use energy safely, reliably and efficiently is the value idea of Oldlang Smart Electrical. Therefore, the intelligent energy management is not only the inevitable development of the times, but also the direction of the development of the intelligent electrical of Oldlang's. Oldlang Smart Electrical provide wisdom into the city, the intelligent household practical products, improve people's life, improve the earth's environment, insist on sustainable development has always been the belief of Oldlang Smart Electrical.

In Oldlang smart electrical, we are always advocating:

INNOVATIVE ENERGY-SAVING EMISSION REDUCTION  **LEADING THE RECYCLING ECONOMY!**



Factory



Hospital



Building



Community



School



Household



Low Carbon



Wireless



Energy Saving



ISO 9001



ISO 14001



OHSAS 18001

Photovoltaic Fuse



HC10gPV 1000V 1A-20A Photovoltaic Fuse

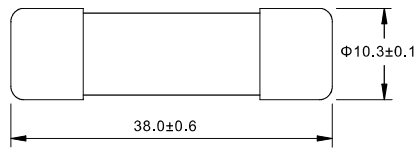
Standard : IEC 60269-6, GB/T 13539.6



INTERRUPTING CAPACITY :
30,000 amperes at 1000V DC (Time Constant : 1-3ms)

Dimensions :

Unit : mm



TECHNICAL PARAMETERS :

CATALOG NO.	CURRENT RATING	SAFETY APPROVALS	
		CGC	TUV
10gPV1U0	1A	•	•
10gPV2U0	2A	•	•
10gPV3U0	3A	•	•
10gPV3.5U0	3.5A	•	•
10gPV4U0	4A	•	•
10gPV5U0	5A	•	•
10gPV6U0	6A	•	•
10gPV8U0	8A	•	•
10gPV10U0	10A	•	•
10gPV12U0	12A	•	•
10gPV15U0	15A	•	•
10gPV16U0	16A	•	•
10gPV20U0	20A	•	•

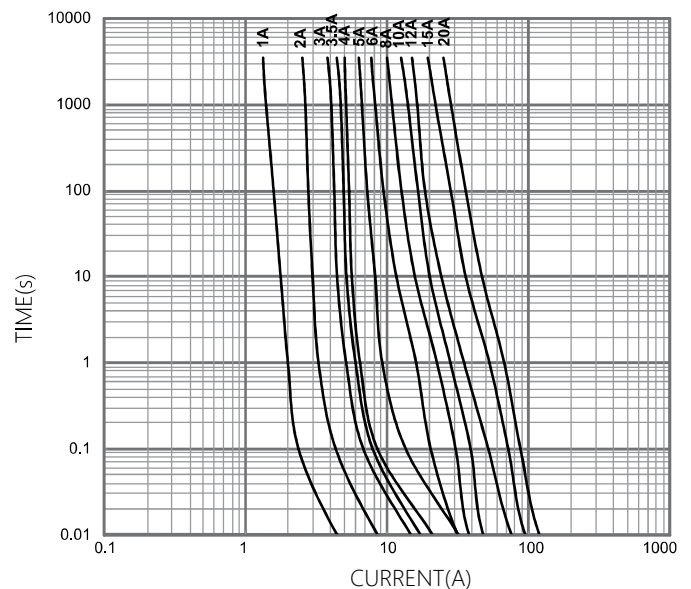
ELECTRICAL CHARACTERISTICS :

% of CURRENT RATING	BLOWING TIME
113%	1 hour Min.
145%	1 hour Max.

U0 DENOTES FOR 1000V DC
• DENOTES FOR APPROVAL
○ DENOTES FOR PENDING

Recommended fuse-base for 10.3mmx38mm fuses
See Model of product: HC101D HF-103D HF-104A

HC10gPV
AVERAGE I-T CHARACTERISTICS CURVE
(FOR REFERENCE ONLY)





ISO 9001



ISO 14001



OHSAS 18001

Photovoltaic Fuse



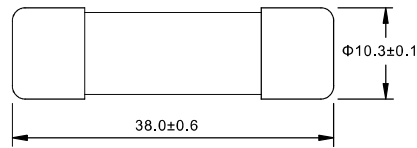
HC10gPV 1100V 1A-20A Photovoltaic Fuse

Standard : IEC 60269-6, GB/T 13539.6



INTERRUPTING CAPACITY :
30,000 amperes at 1100V DC (Time Constant : 1-3ms)

Dimensions : Unit : mm



TECHNICAL PARAMETERS :

CATALOG NO.	CURRENT RATING	SAFETY APPROVALS	
		TUV	
10gPV1U11	1A	○	
10gPV2U11	2A	○	
10gPV3U11	3A	○	
10gPV3.5U11	3.5A	○	
10gPV4U11	4A	○	
10gPV5U11	5A	○	
10gPV6U11	6A	●	
10gPV8U11	8A	●	
10gPV10U11	10A	●	
10gPV12U11	12A	●	
10gPV15U11	15A	●	
10gPV16U11	16A	●	
10gPV20U11	20A	●	

U11 DENOTES FOR 1100V DC

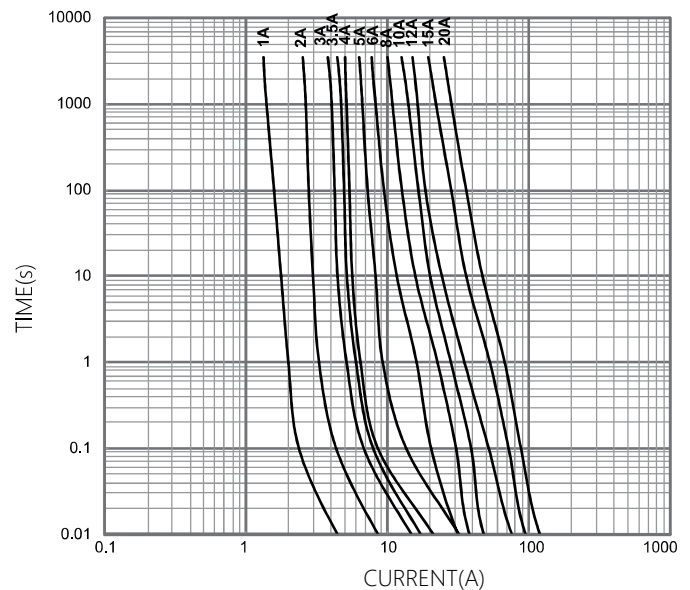
- DENOTES FOR APPROVAL
- DENOTES FOR PENDING

ELECTRICAL CHARACTERISTICS :

% of CURRENT RATING	BLOWING TIME
113%	1 hour Min.
145%	1 hour Max.

HC10gPV

AVERAGE I-T CHARACTERISTICS CURVE
(FOR REFERENCE ONLY)



Recommended fuse-base for 10.3mmx38mm fuses
See Model of product: HC101D HF-103D HF-104A





ISO 9001



ISO 14001



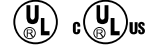
OHSAS 18001

Photovoltaic Fuse



HC10PV 1A-30A Photovoltaic Fuse

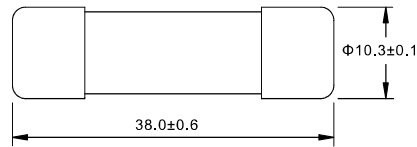
Standard : UL 248-19



INTERRUPTING CAPACITY :
30,000 amperes at 1000V DC
(Time Constant : 1ms or less)

Dimensions :

Unit : mm



TECHNICAL PARAMETERS :

CATALOG NO.	CURRENT RATING	SAFETY APPROVALS	
		UL	cULus
10PV1U0	1A	●	○
10PV2U0	2A	●	○
10PV3U0	3A	●	○
10PV3.5U0	3.5A	●	○
10PV4U0	4A	●	○
10PV5U0	5A	●	○
10PV6U0	6A	●	○
10PV8U0	8A	●	○
10PV10U0	10A	●	○
10PV12U0	12A	●	○
10PV15U0	15A	●	●
10PV16U0	16A	●	●
10PV20U0	20A	●	●
10PV25U0	25A	○	●
10PV30U0	30A	○	●

U0 DENOTES FOR 1000V DC

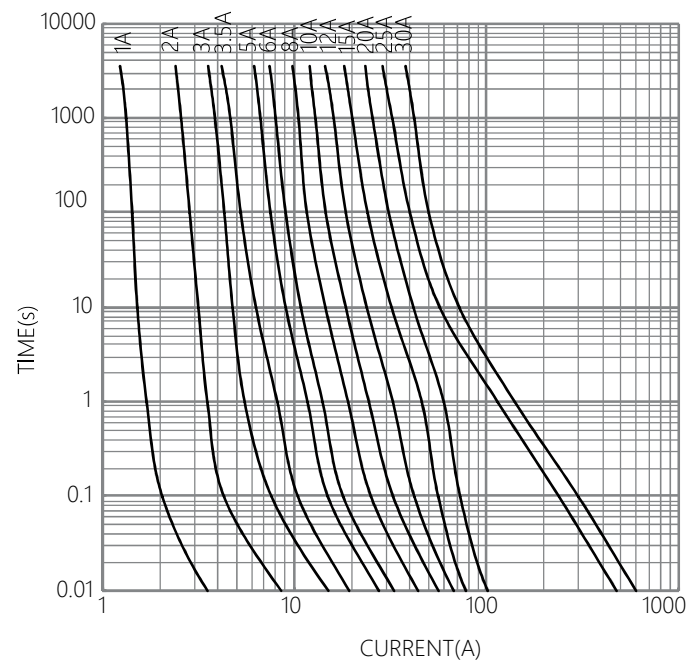
- DENOTES FOR APPROVAL
- DENOTES FOR PENDING

ELECTRICAL CHARACTERISTICS :

% of CURRENT RATING	BLOWING TIME
135%	1 hour Max.
200%	240 seconds Max.

HC10PV

AVERAGE I-T CHARACTERISTICS CURVE
(FOR REFERENCE ONLY)



Recommended fuse-base for 10.3mmx38mm fuses
See Model of product: HC101D HF-103D HF-104A





ISO 9001



ISO 14001



OHSAS 18001

Photovoltaic Fuse



HC10LgPV 1A-30A Photovoltaic Fuse

Standard : IEC 60269-6, GB/T 13539.6

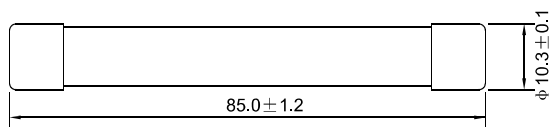
INTERRUPTING CAPACITY (Time Constant:1-3ms)

20,000 amperes at 1500V DC (1A-16A)

20,000 amperes at 1000V DC (20A-30A)

Dimensions :

Unit : mm



TECHNICAL PARAMETERS :

CATALOG NO.	CURRENT RATING	SAFETY APPROVALS	
		TUV	
10LgPV1U15	1A	○	
10LgPV2U15	2A	○	
10LgPV3U15	3A	○	
10LgPV4U15	4A	○	
10LgPV5U15	5A	○	
10LgPV6U15	6A	○	
10LgPV8U15	8A	○	
10LgPV10U15	10A	○	
10LgPV12U15	12A	○	
10LgPV15U15	15A	○	
10LgPV16U15	16A	○	
10LgPV20U0	20A	○	
10LgPV25U0	25A	○	
10LgPV30U0	30A	○	

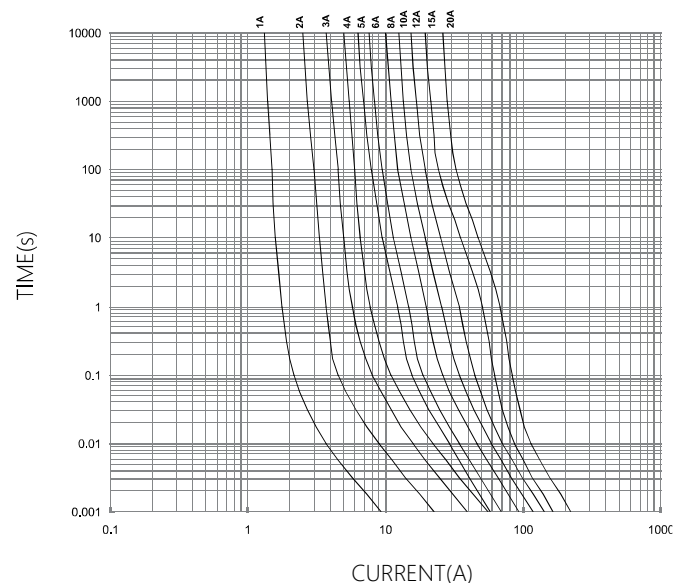
ELECTRICAL CHARACTERISTICS :

% of CURRENT RATING	BLOWING TIME
113%	1 hour Min.
145%	1 hour Max.

HC10LgPV

AVERAGE I-T CHARACTERISTICS CURVE

(FOR REFERENCE ONLY)



U15 DENOTES FOR 1500V DC

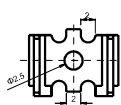
U0 DENOTES FOR 1000V DC

● DENOTES FOR APPROVAL

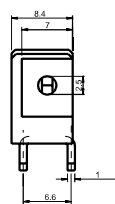
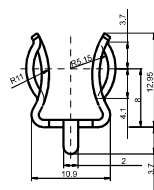
○ DENOTES FOR PENDING

Recommended fuse-base for 10mmx85mm fuses

See Model of product: HF-103D HF-104A



Unit: mm



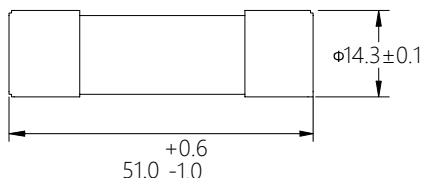
HC14gPV 1500V DC 1A-15A Photovoltaic Fuse



Standard : IEC 6026-6, GB/T 13539.6, UL 248-19

INTERRUPTING CAPACITY :
30,000 amperes at 1500V DC

Dimensions : Unit : mm

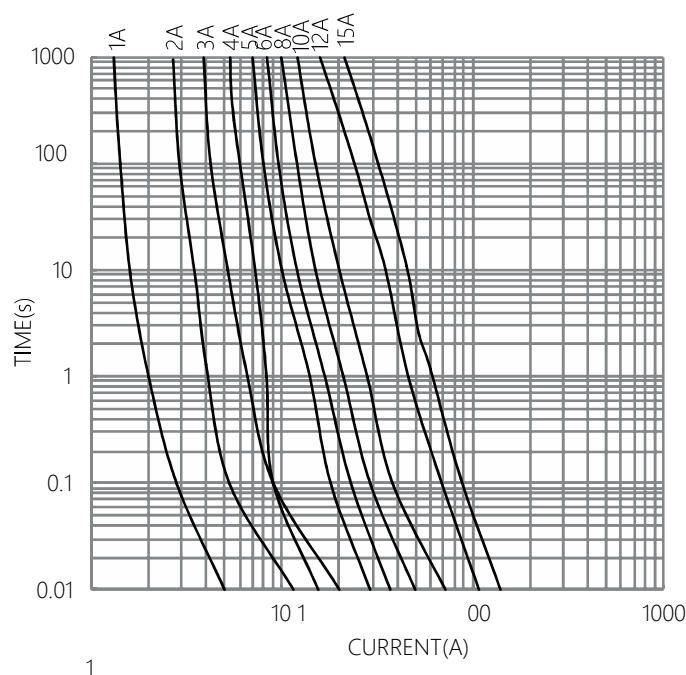


ELECTRICAL CHARACTERISTICS :

% of CURRENT RATING	BLOWING TIME
113%	1 hour Min.
135%	1 hour Max.
145%	1 hour Max.

HC14gPV 1500V

AVERAGE I-T CHARACTERISTICS CURVE
(FOR REFERENCE ONLY)



TECHNICAL PARAMETERS :

CATALOG NO.	CURRENT RATING	SAFETY APPROVALS	
		TUV	cULus
14gPV1U15	1A	○	●
14gPV2U15	2A	○	●
14gPV2.5U15	2.5A	○	●
14gPV3U15	3A	○	●
14gPV3.5U15	3.5A	○	●
14gPV4U15	4A	○	●
14gPV5U15	5A	●	●
14gPV6U15	6A	●	●
14gPV8U15	8A	●	●
14gPV10U15	10A	●	●
14gPV12U15	12A	●	●
14gPV15U15	15A	●	●

U15 DENOTES FOR 1500V DC

- DENOTES FOR APPROVAL
- DENOTES FOR PENDING

Recommended fuse-base for 14.3mmx51mm fuses
See Model of product: HC141B HF-141A





ISO 9001



ISO 14001



OHSAS 18001

Photovoltaic Fuse



HC14LgPV 1500V DC 1A-25A Photovoltaic Fuse

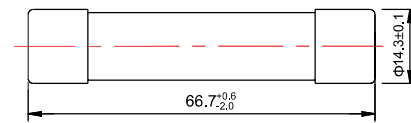
Standard : UL248-19

INTERRUPTING CAPACITY :
30,000 amperes at 1500V DC

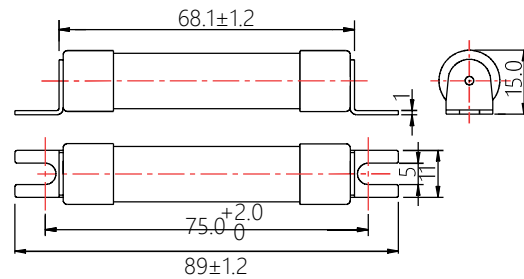
Dimensions/ 尺寸 :

Unit : mm

Type:HC14LgPV Part No.: 14LgPV(amp rating)U15

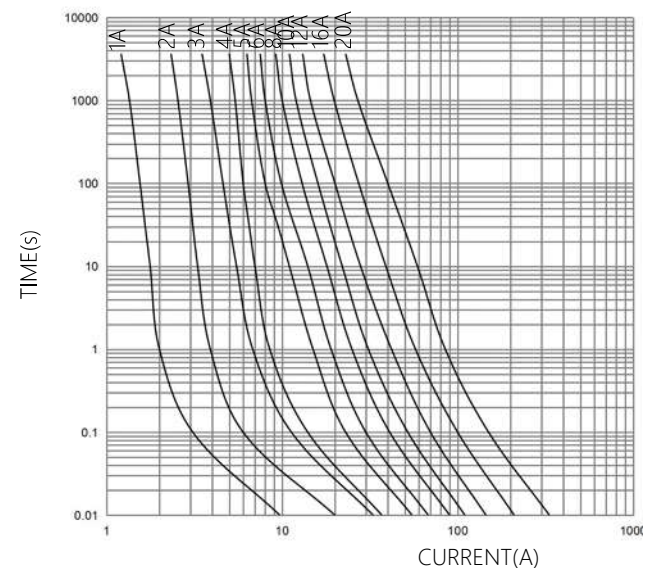


Part No.: 14LgPV(amp rating)U15-T



ELECTRICAL CHARACTERISTICS :

% of CURRENT RATING	BLOWING TIME
135%	1 hour Max.
200%	240 seconds Max.

HC14LgPV
AVERAGE I-T CHARACTERISTICS CURVE
(FOR REFERENCE ONLY)

TECHNICAL PARAMETERS :

CATALOG NO.	CURRENT RATING	SAFETY APPROVALS
		cULus
14LgPV1U15	1A	•
14LgPV1U15-T		•
14LgPV2U15	2A	•
14LgPV2U15-T		•
14LgPV2.5U15	2.5A	•
14LgPV2.5U15-T		•
14LgPV3U15	3A	•
14LgPV3U15-T		•
14LgPV4U15	4A	•
14LgPV4U15-T		•
14LgPV5U15	5A	•
14LgPV5U15-T		•
14LgPV6U15	6A	•
14LgPV6U15-T		•
14LgPV8U15	8A	•
14LgPV8U15-T		•
14LgPV10U15	10A	•
14LgPV10U15-T		•
14LgPV12U15	12A	•
14LgPV12U15-T		•
14LgPV15U15	15A	•
14LgPV15U15-T		•
14LgPV20U15	20A	•
14LgPV20U15-T		•

U15 DENOTES FOR 1500V DC

• DENOTES FOR APPROVAL
○ DENOTES FOR PENDINGRecommended fuse-base for 14.3mmx65mm fuses
See Model of product: HF-141A



NH1gPV 1100V DC 40A-250A Photovoltaic Fuse



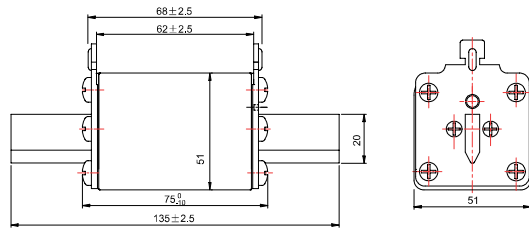
Standard : IEC 60269-6, GB/T 13539.6

INTERRUPTING CAPACITY :

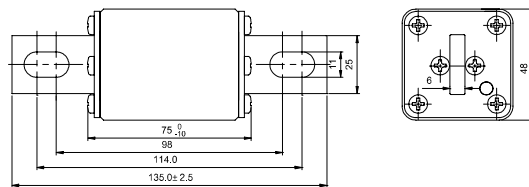
50,000 amperes at 1100V DC (Time Constant:1-3ms)

Dimensions (mm)

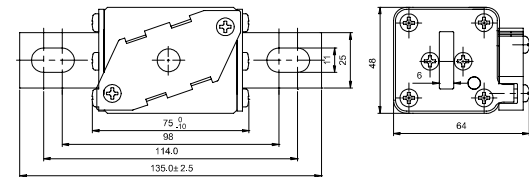
Type:NH1gPV Part No.: 1gPV(amp rating)U11A/A1/A2



Type:NH1gPV-B Part No.:1gPV(amp rating)U11B



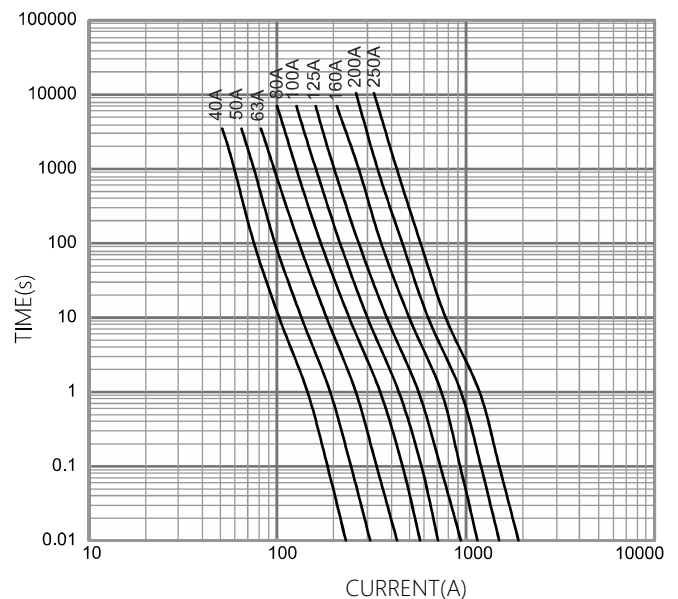
Type:NH1gPV-B Part No.: 1gPV(amp rating)U11BC



NH1gPV 1100V

AVERAGE I-T CHARACTERISTICS CURVE

(FOR REFERENCE ONLY)



TECHNICAL PARAMETERS :

CATALOG NO.	CURRENT RATING	SAFETY APPROVALS	
		CGC	TUV
1gPV40U11A/A1/A2	40A	●	●
1gPV40U11B/BC	40A	○	●
1gPV50U11A/A1/A2	50A	●	●
1gPV50U11B/BC	50A	○	●
1gPV63U11A/A1/A2	63A	●	●
1gPV63U11B/BC	63A	○	●
1gPV80U11A/A1/A2	80A	●	●
1gPV80U11B/BC	80A	○	●
1gPV100U11A/A1/A2	100A	●	●
1gPV100U11B/BC	100A	○	●
1gPV125U11A/A1/A2	125A	●	●
1gPV125U11B/BC	125A	○	●
1gPV160U11A/A1/A2	160A	●	●
1gPV160U11B/BC	160A	○	●
1gPV200U11A/A1/A2	200A	●	●
1gPV200U11B/BC	200A	○	●
1gPV225U11A/A1/A2	225A	●	●
1gPV225U11B/BC	225A	○	●
1gPV250U11A/A1/A2	250A	●	●
1gPV250U11B/BC	250A	○	●

A- Blade contacts with the center indicator

A1- Blade contacts with the top indicator

A2- Blade contacts with the central indicator and the top indicator

B- Bolted connections

BC- Bolted connections with microswitch base

A, A1, A2-Optional

B, BC-Optional

U11 DENOTES FOR 1100V DC

● DENOTES FOR APPROVAL

○ DENOTES FOR PENDING

ELECTRICAL CHARACTERISTICS :

Rating	CONVENTIONAL	CONVENTIONAL CURRENT	
		CONVENTIONAL NON-FUSING CURRENT(A)	CONVENTIONAL FUSING CURRENT(A)
$I_n \leq 63$	1	$1.13I_n$	$1.45I_n$
$63 < I_n \leq 160$	2	$1.13I_n$	$1.45I_n$
$160 < I_n \leq 250$	3	$1.13I_n$	$1.45I_n$

CATALOG NO.	Optional Accessory	
	Fuse Holders	Microswitches
1gPVXXXU11A	NH1BU11	/
1gPVXXXU11A1/A2	NH1BU11	HMT-01
1gPVXXXU11BC	/	HMC-01



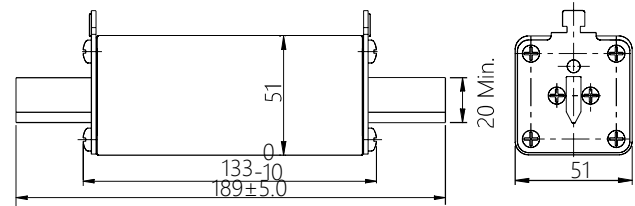
NH1XLgPV 1000V DC 80A-250A Photovoltaic Fuse

Standard : IEC 60269-6, GB/T 13539.6

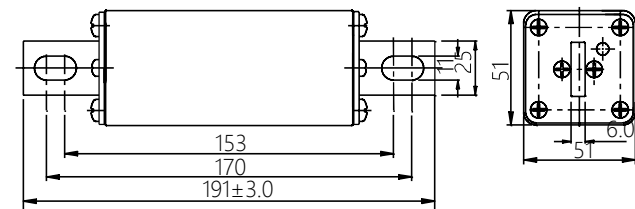
INTERRUPTING CAPACITY :
50,000 amperes at 1000V DC (Time Constant:1-3ms)

Dimensions : Unit : mm

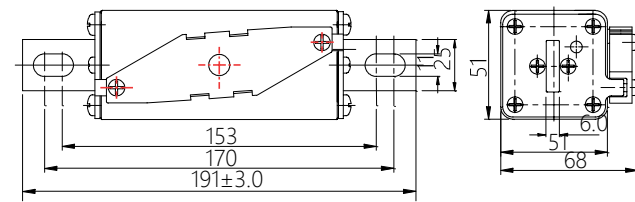
Type:NH1XLgPV Part No.: 1XLgPV(amp rating)U0A/A1/A2



Type:NH1XLgPV-B Part No.: 1XLgPV(amp rating)U0B

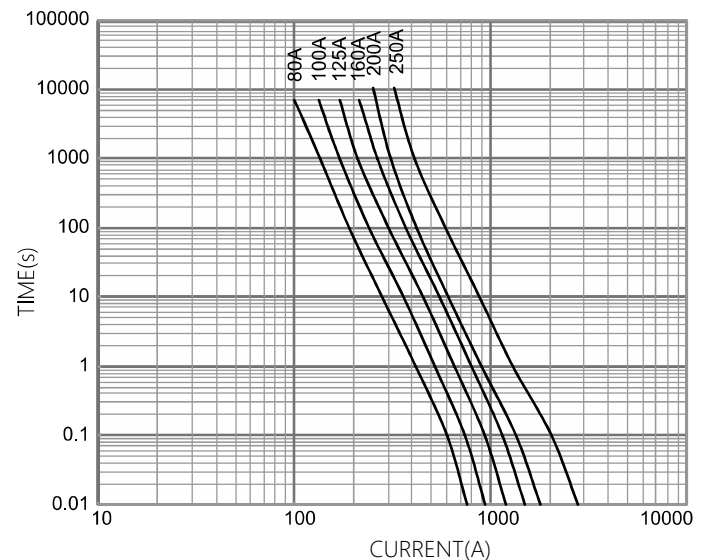


Type:NH1XLgPV-B Part No.: 1XLgPV(amp rating)U0BC



NH1XLgPV

AVERAGE I-T CHARACTERISTICS CURVE
(FOR REFERENCE ONLY)



TECHNICAL PARAMETERS :

CATALOG NO.	CURRENT RATING	SAFETY APPROVALS	
		CGC	TUV
1XLgPV80U0A/A1/A2	80A	○	○
1XLgPV80U0B/BC	80A	○	○
1XLgPV100U0A/A1/A2	100A	○	○
1XLgPV100U0B/BC	100A	○	○
1XLgPV125U0A/A1/A2	125A	○	○
1XLgPV125U0B/BC	125A	○	○
1XLgPV160U0A/A1/A2	160A	○	○
1XLgPV160U0B/BC	160A	○	○
1XLgPV200U0A/A1/A2	200A	○	○
1XLgPV200U0B/BC	200A	○	○
1XLgPV250U0A/A1/A2	250A	○	○
1XLgPV250U0B/BC	250A	○	○

A- Blade contacts with the center indicator
A1- Blade contacts with the top of the indicator
A2- Blade contacts with the central indicator and the top of the indicator

B- Bolted connections
BC- Bolted connections with microswitch base
A, A1, A2-optional
B, BC-optional

U0 DENOTES FOR 1000V DC
● DENOTES FOR APPROVAL
○ DENOTES FOR PENDING

CATALOG NO.	Optional Accessory	
	Fuse Holders	Microswitches
1XLgPVXXXU0A	NH1XLBU0	/
1XLgPVXXXU0A1/A2	NH1XLBU0	HMT-01
1XLgPVXXXU0BC	/	HMC-01



NH2XLgPV 1100V DC 125A-400A Photovoltaic Fuse

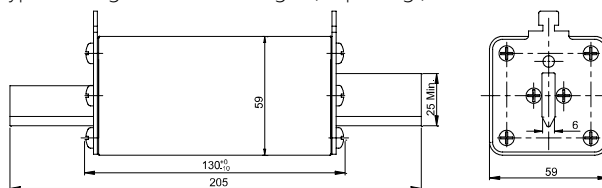


Standard : IEC 60269-6, GB/T 13539.6

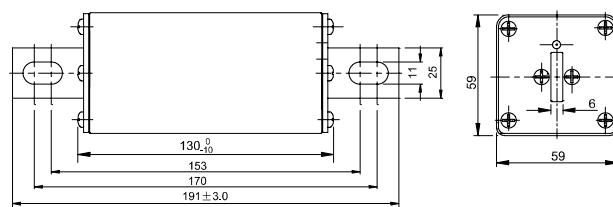
INTERRUPTING CAPACITY :
30,000 amperes at 1100V DC (Time Constant: 1-3ms)

Dimensions (mm)

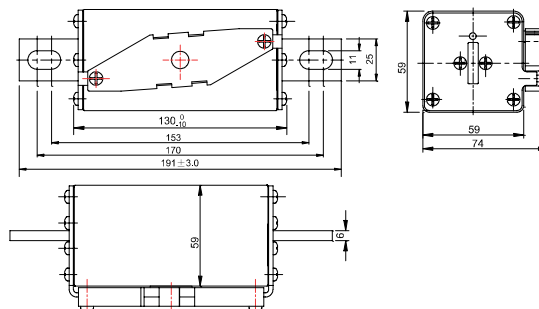
Type:NH2XLgPV Part No.: 2XLgPV(amp rating)U11A/A1/A2



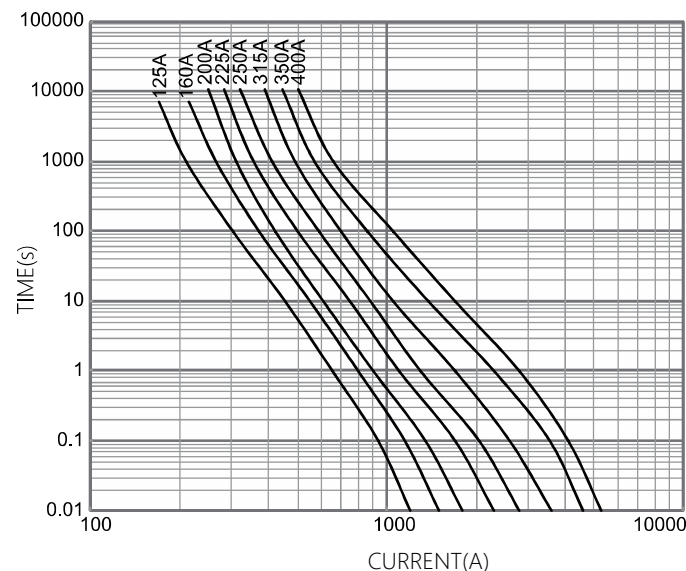
Type:NH2XLgPV-B Part No.: 2XLgPV(amp rating)U11B



Type:NH2XLgPV-B Part No.: 2XLgPV(amp rating)U11BC



NH2XLgPV 1100V
AVERAGE I-T CHARACTERISTICS CURVE
(FOR REFERENCE ONLY)



TECHNICAL PARAMETERS :

CATALOG NO.	CURRENT RATING	SAFETY APPROVALS	
		CGC	TUV
2XLgPV125U11A/A1/A2	125A	●	●
2XLgPV125U11B/BC	125A	○	●
2XLgPV160U11A/A1/A2	160A	●	●
2XLgPV160U11B/BC	160A	○	●
2XLgPV200U11A/A1/A2	200A	●	●
2XLgPV200U11B/BC	200A	○	●
2XLgPV225U11A/A1/A2	225A	●	●
2XLgPV225U11B/BC	225A	○	●
2XLgPV250U11A/A1/A2	250A	●	●
2XLgPV250U11B/BC	250A	○	●
2XLgPV315U11A/A1/A2	315A	●	●
2XLgPV315U11B/BC	315A	○	●
2XLgPV350U11A/A1/A2	350A	●	●
2XLgPV350U11B/BC	350A	○	●
2XLgPV400U11A/A1/A2	400A	●	●
2XLgPV400U11B/BC	400A	○	●

A- Blade contacts with the center indicator
A1- Blade contacts with the top indicator
A2- Blade contacts with the central indicator and the top indicator

B- Bolted connections
BC- Bolted connections with microswitch base
A, A1, A2-optional
B, BC-optional

U11 DENOTES FOR 1100V DC
● DENOTES FOR APPROVAL
○ DENOTES FOR PENDING

CATALOG NO.	Optional Accessory	
	Fuse Holders	Microswitches
2XLgPVXXXU11A	NH3LBU11	/
2XLgPVXXXU11A1/A2	NH3LBU11	HMT-01
2XLgPVXXXU11BC	/	HMC-01



NH3LgPV 1100V DC 315A-630A Photovoltaic Fuse

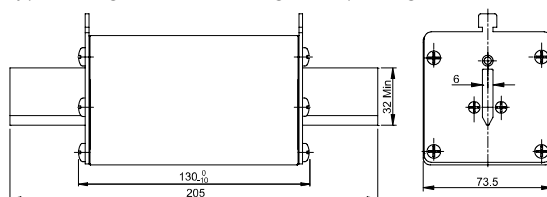
Standard : IEC 60269-6, GB/T 13539.6

INTERRUPTING CAPACITY :

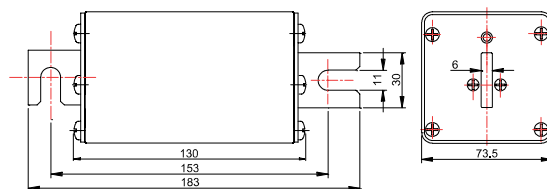
50,000 amperes at 1100V DC (Time Constant:1-3ms)

Dimensions (mm)

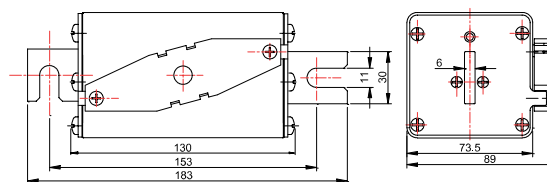
Type:NH3LgPV Part No.: 3LgPV(amp rating)U11A/A1/A2



Type:NH3LgPV-B Part No.: 3LgPV(amp rating)U11B

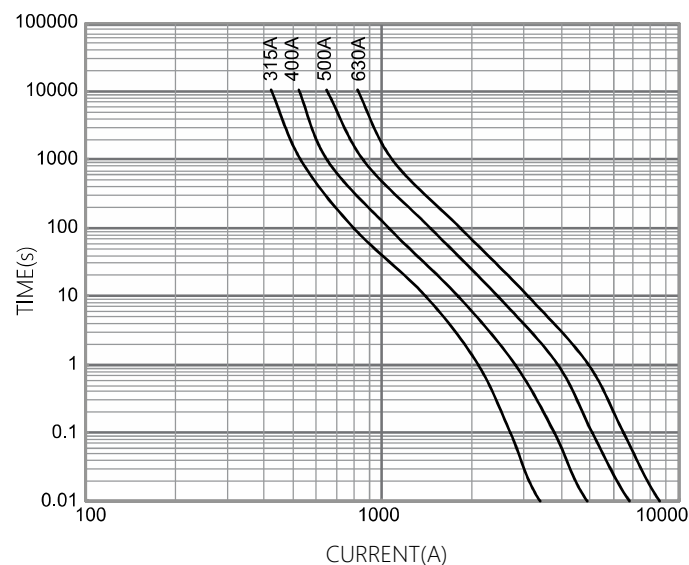


Type:NH3LgPV-B Part No.: 3LgPV(amp rating)U11BC



NH3LgPV 1100V

AVERAGE I-T CHARACTERISTICS CURVE
(FOR REFERENCE ONLY)



TECHNICAL PARAMETERS :

CATALOG NO.	CURRENT RATING	SAFETY APPROVALS	
		CGC	TUV
3LgPV315U11A/A1/A2	315A	○	○
3LgPV315U11B/BC	315A	○	○
3LgPV400U11A/A1/A2	400A	○	○
3LgPV400U11B/BC	400A	○	○
3LgPV500U11A/A1/A2	500A	○	○
3LgPV500U11B/BC	500A	○	○
3LgPV630U11A/A1/A2	630A	○	○
3LgPV630U11B/BC	630A	○	○

A- Blade contacts with the center indicator
 A1- Blade contacts with the top indicator
 A2- Blade contacts with the central indicator and the top indicator

B- Bolted connections
 BC- Bolted connections with microswitch base
 A、 A1、 A2-optional
 B、 BC-optional

U11 DENOTES FOR 1100V DC

- DENOTES FOR APPROVAL
- DENOTES FOR PENDING

ELECTRICAL CHARACTERISTICS :

Rating	CONVENTIONAL TIME(H)	CONVENTIONAL CURRENT	
		CONVENTIONAL NON-FUSING CURRENT(A)	CONVENTIONAL FUSING CURRENT(A)
$160 < I_n \leq 400$	3	$1.13I_n$	$1.45I_n$
$I_n > 400$	4	$1.13I_n$	$1.45I_n$

CATALOG NO.	Optional Accessory	
	Fuse Holders	Microswitches
3LgPVXXU11A	NH3LB630U11	/
3LgPVXXU11A1/A2	NH3LB630U11	HMT-01
3LgPVXXU11BC	/	HMC-01



ISO 9001



ISO 14001



OHSAS 18001

Photovoltaic Fuse



NH1XLgPV 1500V DC 63A-200A Photovoltaic Fuse



Standard : IEC 60269-6, GB/T 13539.6

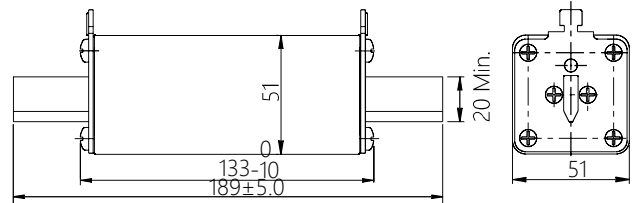
INTERRUPTING CAPACITY :

30,000 amperes at 1500V DC (Time Constant:1-3ms)

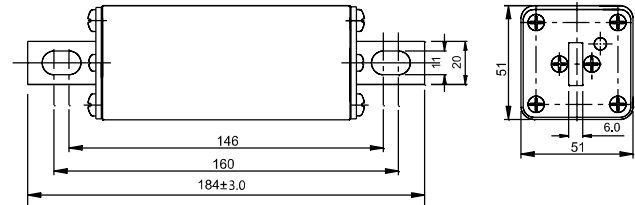
Dimensions :

Unit : mm

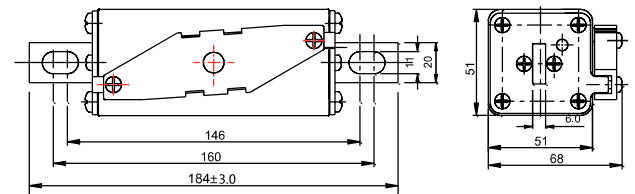
Type:NH1XLgPV Part No.: 1XLgPV(amp rating)U15A/A1/A2



Type:NH1XLgPV-B Part No.: 1XLgPV(amp rating)U15B



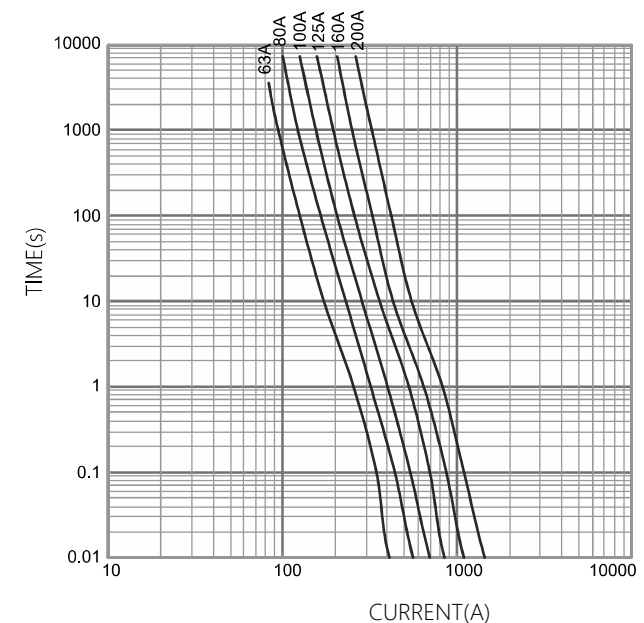
Type:NH1XLgPV-B Part No.: 1XLgPV(amp rating)U15BC



NH1XLgPV 1500V

AVERAGE I-T CHARACTERISTICS CURVE

(FOR REFERENCE ONLY)



TECHNICAL PARAMETERS :

CATALOG NO.	CURRENT RATING	SAFETY APPROVALS	
		CGC	TUV
1XLgPV63U15A/A1/A2	63A	○	●
1XLgPV63U15B/BC		○	●
1XLgPV80U15A/A1/A2	80A	○	●
1XLgPV80U15B/BC		○	●
1XLgPV100U15A/A1/A2	100A	○	●
1XLgPV100U15B/BC		○	●
1XLgPV125U15A/A1/A2	125A	○	●
1XLgPV125U15B/BC		○	●
1XLgPV160U15A/A1/A2	160A	○	●
1XLgPV160U15B/BC		○	●
1XLgPV200U15A/A1/A2	200A	○	●
1XLgPV200U15B/BC		○	●

A- Blade contacts with the center indicator
A1- Blade contacts with the top of the indicator
A2- Blade contacts with the central indicator and the top of the indicator

B- Bolted connections
BC- Bolted connections with microswitch base
A, A1, A2-optional
B, BC-optional

U15 DENOTES FOR 1500V DC

● DENOTES FOR APPROVAL

○ DENOTES FOR PENDING

CATALOG NO.	Optional Accessory	
	Fuse Holders	Microswitches
1XLgPVXXXU15A	NH1XLBU15	/
1XLgPVXXXU15A1/A2	NH1XLBU15	HMT-01
1XLgPVXXXU15BC	/	HMC-01



NH2XLPV 1500V DC 63A-400A Photovoltaic Fuse

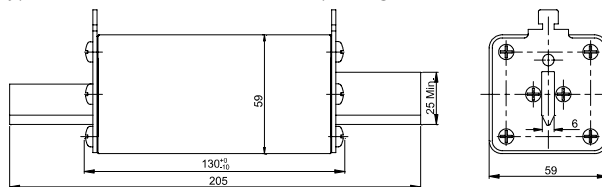


Standard : UL 248-19

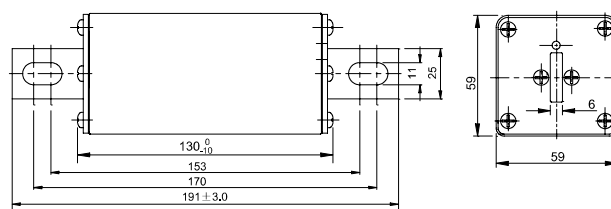
INTERRUPTING CAPACITY :
30,000 amperes at 1500V DC

Dimensions (mm)

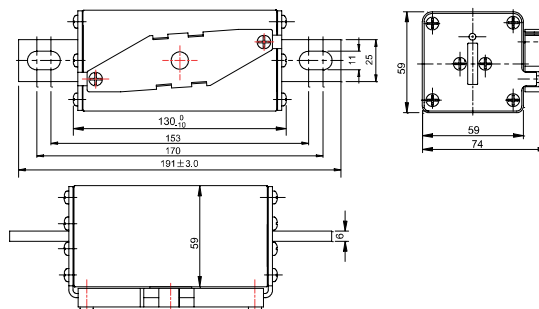
Type:NH2XLPV Part No.: 2XLPV(amp rating)U15A/A1/A2



Type:NH2XLPV-B Part No.: 2XLPV(amp rating)U15B

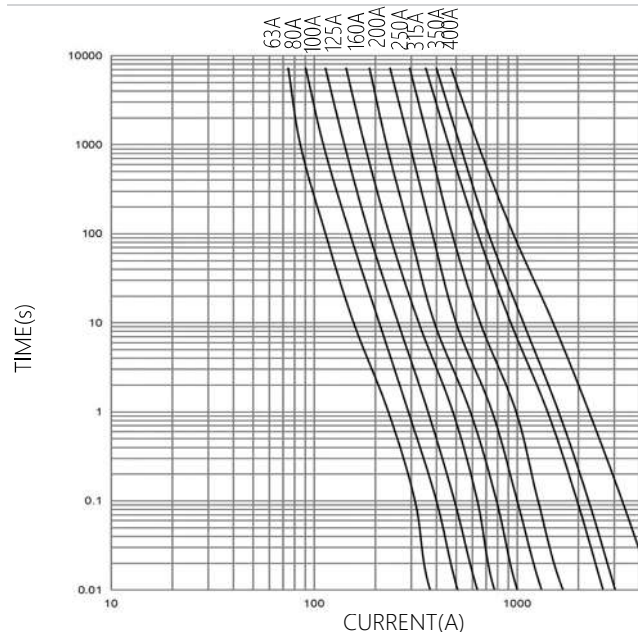


Type:NH2XLPV-B Part No.: 2XLPV(amp rating)U15BC



NH2XLPV

AVERAGE I-T CHARACTERISTICS CURVE
(FOR REFERENCE ONLY)



TECHNICAL PARAMETERS :

CATALOG NO.	CURRENT RATING	SAFETY APPROVALS	
		cULus	
2XLPV63U15A/A1/A2	63A	•	•
2XLPV63U15B/BC		•	•
2XLPV80U15A/A1/A2	80A	•	•
2XLPV80U15B/BC		•	•
2XLPV100U15A/A1/A2	100A	•	•
2XLPV100U15B/BC		•	•
2XLPV125U15A/A1/A2	125A	•	•
2XLPV125U15B/BC		•	•
2XLPV160U15A/A1/A2	160A	•	•
2XLPV160U15B/BC		•	•
2XLPV200U15A/A1/A2	200A	•	•
2XLPV200U15B/BC		•	•
2XLPV250U15A/A1/A2	250A	•	•
2XLPV250U15B/BC		•	•
2XLPV315U15A/A1/A2	315A	•	•
2XLPV315U15B/BC		•	•
2XLPV350U15A/A1/A2	350A	•	•
2XLPV350U15B/BC		•	•
2XLPV400U15A/A1/A2	400A	•	•
2XLPV400U15B/BC		•	•

A- Blade contacts with the center indicator
A1- Blade contacts with the top indicator
A2- Blade contacts with the central indicator and the top indicator

B- Bolted connections
BC- Bolted connections with microswitch base
A, A1, A2-optional
B, BC-optional

U15 DENOTES FOR 1500V DC

• DENOTES FOR APPROVAL
○ DENOTES FOR PENDING

CATALOG NO.	Optional Accessory	
	Fuse Holders	Microswitches
2XLPVXXU15A	NH3LBU15	/
2XLPVXXU15A1/A2	NH3LBU15	HMT-01
2XLPVXXU15BC	/	HMC-01



ISO 9001



ISO 14001



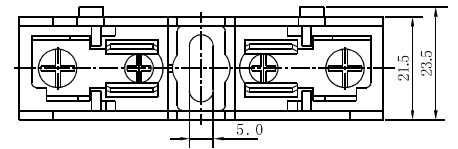
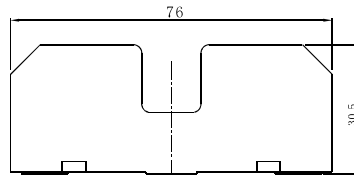
OHSAS 18001

Photovoltaic Fuse

Cylindrical Fuse Holders

Dimensions :

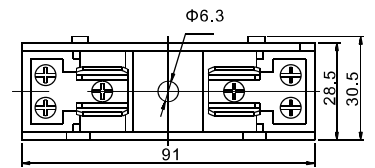
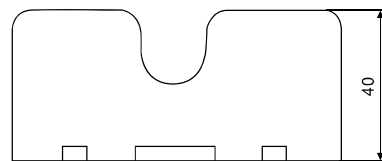
Unit : mm



Model of product	Applicable fuse link size	Rated voltage (V)	Rated current (A)	Weight (g)	Safety Approvals
HC101A	10X38	600	30	41.5	UR

Dimensions :

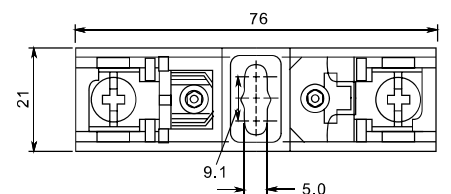
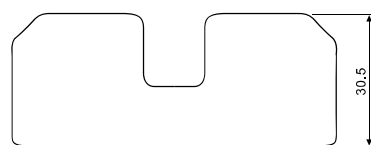
Unit : mm



Model of product	Applicable fuse link size	Rated voltage (V)	Rated current (A)	Weight (g)	Safety Approvals
HC141A	14X51	690	50	78	CCC

Dimensions :

Unit : mm



Model of product	Applicable fuse link size	Rated voltage (V)	Rated current (A)	Weight (g)	Safety Approvals
HC101C	10X38	600	30	41.5	cULus



ISO 9001



ISO 14001



OHSAS 18001

Photovoltaic Fuse

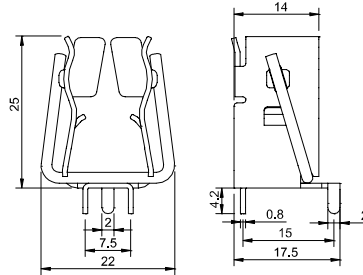
Cylindrical Fuse Holders

HF-141A (RoHS)



Dimensions :

Unit : mm



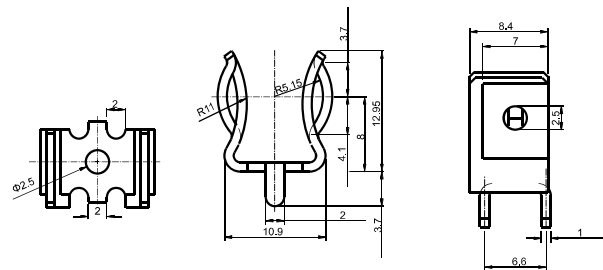
FUSE CLIP FOR 14x51 OR 14x65 FUSE
PHOSPHOR BRONZE, TIN PLATED

HF-103D(RoHS)



Dimensions :

Unit : mm



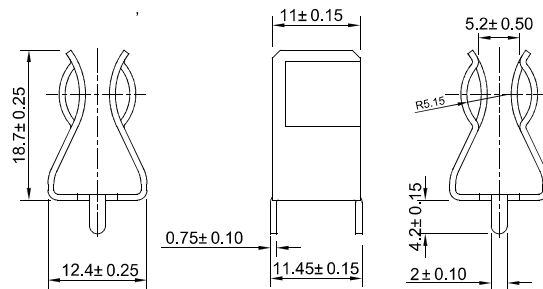
FUSE CLIP FOR 10X38 FUSE
PHOSPHOR BRONZE, NICKEL PLATED

HF-104A(RoHS)



Dimensions :

Unit : mm



FUSE CLIP FOR 10X38 FUSE
PHOSPHOR BRONZE, NICKEL PLATED



ISO 9001



ISO 14001



OHSAS 18001

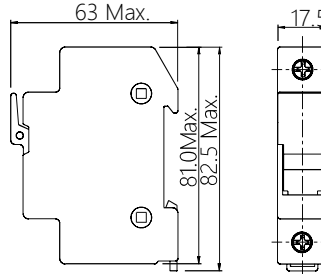
Photovoltaic Fuse

Cylindrical Fuse Holders



Dimensions :

Unit : mm

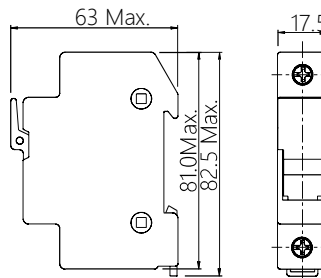


Model of product	Applicable fuse link size	Rated voltage (V)	Rated current (A)	Safety Approvals	Remark
HC101D	10X38	1000	20	TUVCGC	
			30	UL	



Dimensions :

Unit : mm

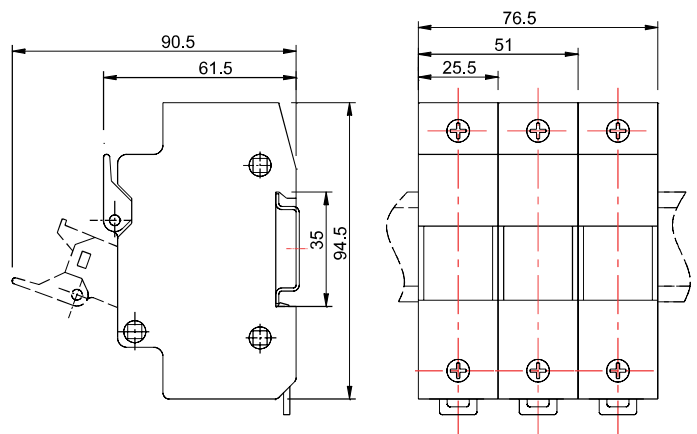


Model of product	Applicable fuse link size	Rated voltage (V)	Rated current (A)	Safety Approvals	Remark
HC101DL	10X38	1000	30	UL	with indicator light



Dimensions :

Unit : mm



Model of product	Applicable fuse link size	Rated voltage (V)	Rated current (A)	Safety Approvals
HC141B	14X51	690	50	TUV, UL
		1500	15	



ISO 9001



ISO 14001



OHSAS 18001

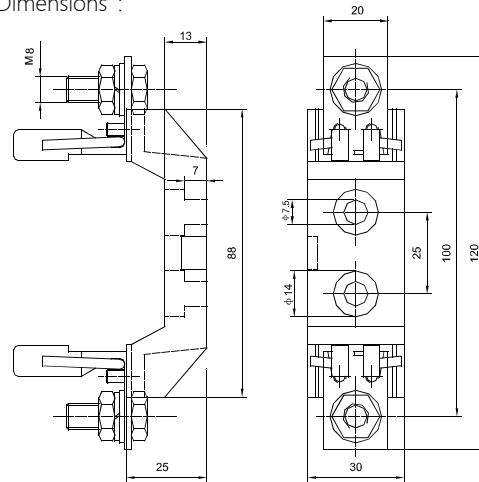
Photovoltaic Fuse

Fuse-base with Blade Contacts



Dimensions :

Unit : mm

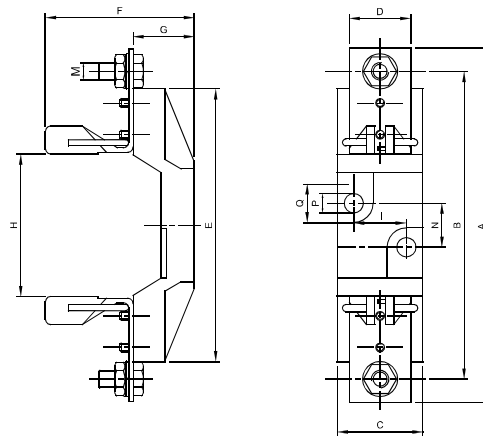


Model of product	Applicable fuse link size	Rated voltage (V)	Rated current (A)	Safety Approvals
NH00B	NH000/NH00	690	160	CCC



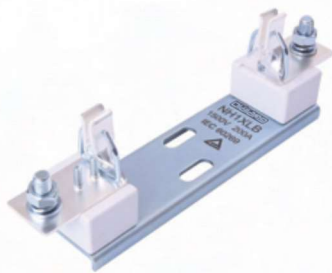
Dimensions :

Unit : mm



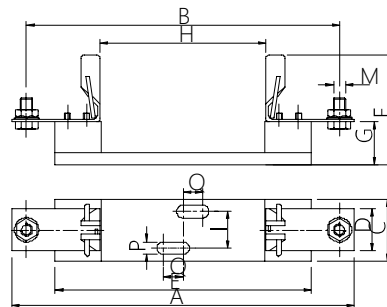
Model of product	Catalog No.	Applicable fuse link size	Rated voltage (V)	Rated current (A)	Safety Approvals
NH1B	NH1B250U6	NH1	690	250	TUV CGC
	NH1B250U11		1100	250	
NH2B	NH2B400U6	NH2	690	400	
NH3B	NH3B630U6	NH3	690	630	

Size	A	B	C	D	E	F	G	H	I	M	N	P	Q
NH1	200	175	60	35	155	85	35	80	30	M10	25	10.5	20.5
NH2	225	200	60	35	155	90	35	80	30	M10	25	10.5	20.5
NH3	240	210	60	35	155	100	35	80	30	M10	25	10.5	20.5



Dimensions :

Unit : mm



Model of product	Catalog No.	Applicable fuse link size	Rated voltage (V)	Rated current (A)	Safety Approvals
NH1XLB	NH1XLB200U15	NH1XL	1500	200	TUV
NH2XLB	NH2XLB400U15	NH2XL	1500	400	
NH3LB	NH3LB400U11	NH2XL/NH3L	1100	400	TUV
NH3LB	NH3LB630U11	NH2XL/NH3L	1100	630	

Size	A	B	C	D	E	F	G	H	I	M	P	Q
NH1XL	257	232	51	35	210	85	37	136	30	M10	10.5	16
NH2XL	281	257	51	35	210	90	37	136	30	M10	10.5	16
NH3L	292	267	51	35	210	100	37	136	30	M12	10.5	16



SAVE ON ENERGY, STARTS FROM ME !



BUREAU
VERITAS



OLDLANG

Oldlang Smart Electrical



TrustPass



Gold Supplier



Trade Assurance



Low Carbon



Wireless



Energy Saving

E-mail: Oldlang_sale@163.com Oldlang_000@163.com
[Http://Oldlang.en.alibaba.com](http://Oldlang.en.alibaba.com) [Http://Smartelectrical.en.alibaba.com](http://Smartelectrical.en.alibaba.com) [Http://www.Oldlang.com](http://www.Oldlang.com)
Hangzhou: Future Science And Technology City / Nanjing: Gaochun Economic development zone

