



LEADING THE RECYCLING ECONOMY,  
INNOVATIVE ENERGY-SAVING EMISSION REDUCTION!

**Oldlang**  
Oldlang Smart Electrical



Connect the cloud data  
Integration of intelligent system  
Intelligent terminal APP



LoRaWAN Rs485

Wireless communication  
and remote control

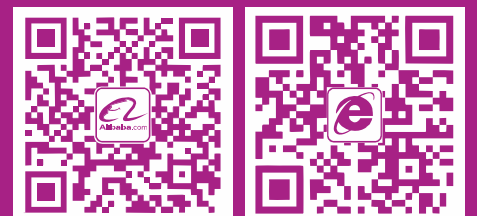
RS485  
Remote control



# CHJ13

Remote Communication And Measurement Of  
Smart Circuit Breaker

Power acquisition protocol:  
DL/T645 or Modbus



Gold Supplier Trade Assurance  
[Http://Oldlang.en.alibaba.com](http://Oldlang.en.alibaba.com)  
**Alibaba.com**





# CHJ13

Remote Communication And Measurement Of Smart Circuit Breaker

13 series

## Smart Electrical Control System

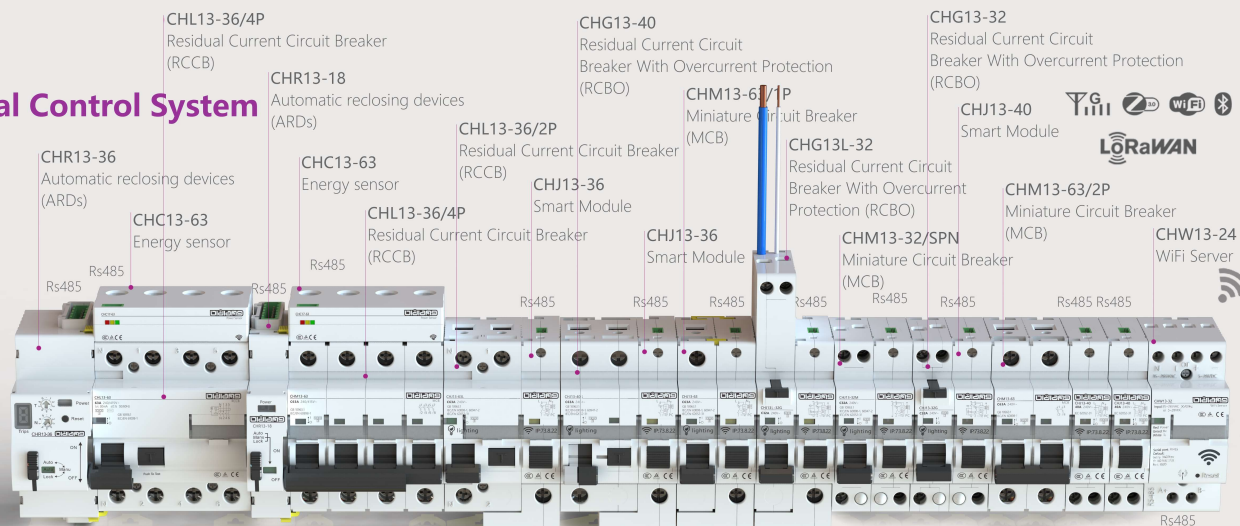


Cloud control  
Smart terminal control  
PC control

APP:



Energy analysis  
Remote intelligent control



Applicable scenario:

Energy management / Wisdom factory / Smart village / Building control / Wisdom family / Energy consumption monitoring



Innovative Energy-Saving Emission Reduction  
Leading The Recycling Economy

www.Oldlang.com  
Oldlang\_sale@163.com

## About Oldlang Smart Electrical

The company named Oldlang Smart Electrical, which is a modern technology enterprise, committed to innovating energy conservation and emission reduction and leading the circular economy. The products focus on the original, low carbon, energy saving, collecting data, remote control and other functions are the characteristics of Oldlang's Smart electrical products. To enable users to use energy safely, reliably and efficiently is the value idea of Oldlang Smart Electrical. Therefore, the intelligent energy management is not only the inevitable development of the times, but also the direction of the development of the intelligent electrical of Oldlang's. Oldlang Smart Electrical provide wisdom into the city, the intelligent household practical products, improve people's life, improve the earth's environment, insist on sustainable development has always been the belief of Oldlang Smart Electrical.

In Oldlang smart electrical, we are always advocating:

**INNOVATIVE ENERGY-SAVING EMISSION REDUCTION LEADING THE RECYCLING ECONOMY!**



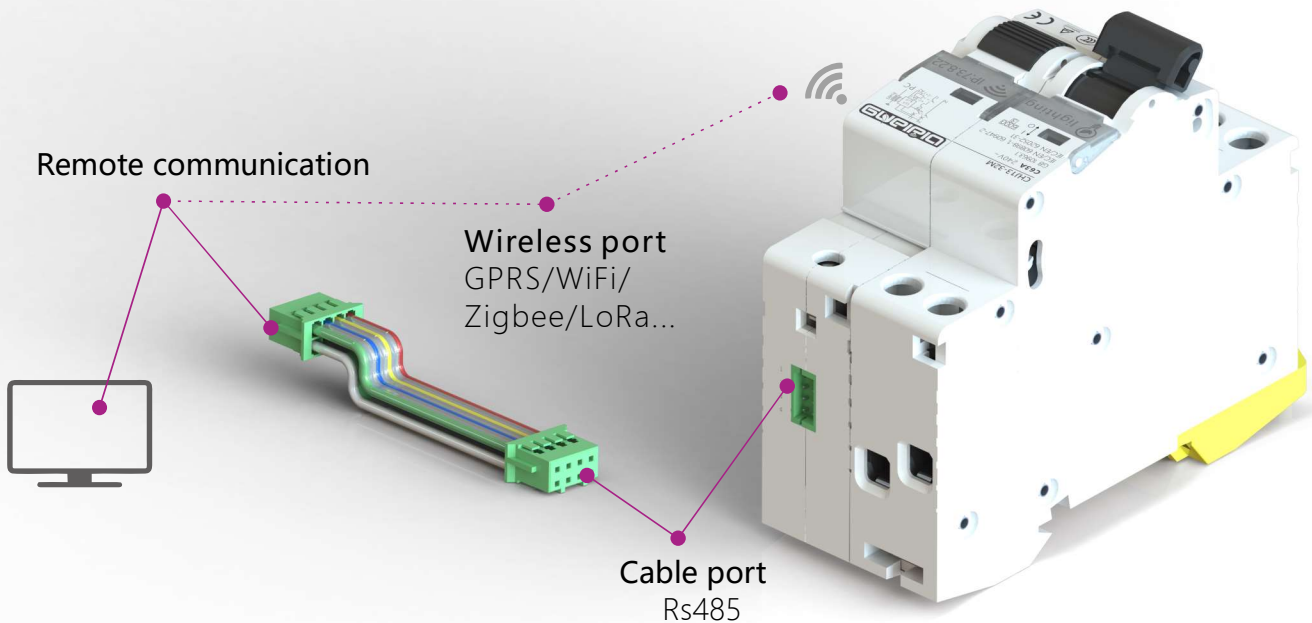
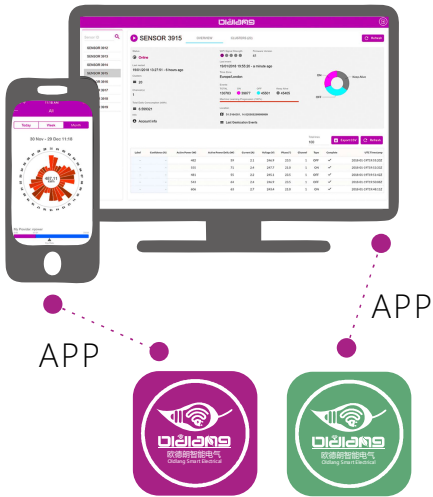


# CHJ13 series

## Smart Electrical Control System

### Features

- Circuit short circuit protection + Overload protection
- Over voltage protection + Under voltage protection
- Leakage protection + Shock protection
- Timing switch + Delay switch
- Automatic connect and cut circuit + Remote control connect and cut circuit
- Electricity measurement + Electricity charge control
- Temperature detection + Failure analysis
- Electrical parameter acquisition
- Data limited transmission and wireless transmission
- Combine cloud and APP data analysis
- Check the operation status of electrical equipment
- Monitor carbon dioxide emissions
- Allow software to set protection parameters
- Energy conservation and emission reduction management is realized through management software





# CHJ13-63

## Remote Communication And Measurement Of Smart Circuit Breaker

### Features

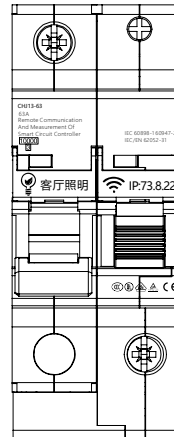
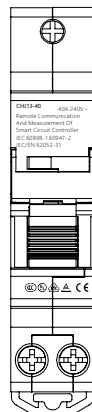
- Overload, short-circuit current, energy leakage (optional) protection.
- Timing control of switching on or off.
- Remote control of switching on or off, the supported network connections include: WIFI/GPRS/GPS/ZIGBEE/KNX.
- Remote measurement and monitoring, to monitor and measure the energy usage of electrical equipment.
- Self diagnostic (PC/Smart phone).
- Reading database (PC/Smart phone).
- MCB + MLR (MCB: Miniature circuit breaker, MLR: Magnetic Latching Relay).

### Standard

- MCB: IEC 60898-1 60947-2
- MLR: IEC/EN 62052-31

### Usage

CHJ13 is multi-function circuit breaker, which is applicable to circuit in smart home, street lamp control system and other places which need wireless remote control. It is rated voltage is 230/400V~, rated current is 63A, frequency 50Hz/60Hz, breaking capacity 10KA with functions such as overload protection, shortcircuit protection, earth leakage protection. This product is used to turn on/off electrical appliances, electrical machinery, equipment in long distance connected by WIFI/GPRS/GPS/ZIGBEE/KNX or RS485 cable connection, and also is applied to measure electricity consumption.



### Construction features

This product is composed of high breaking capacity miniature circuit breaker and permanent magnet controller for executive control function. It is suitable for a variety of wireless network connections and cable connection with external interface signals, and also can be extended other functions by modular combination.



# CHJ13-40

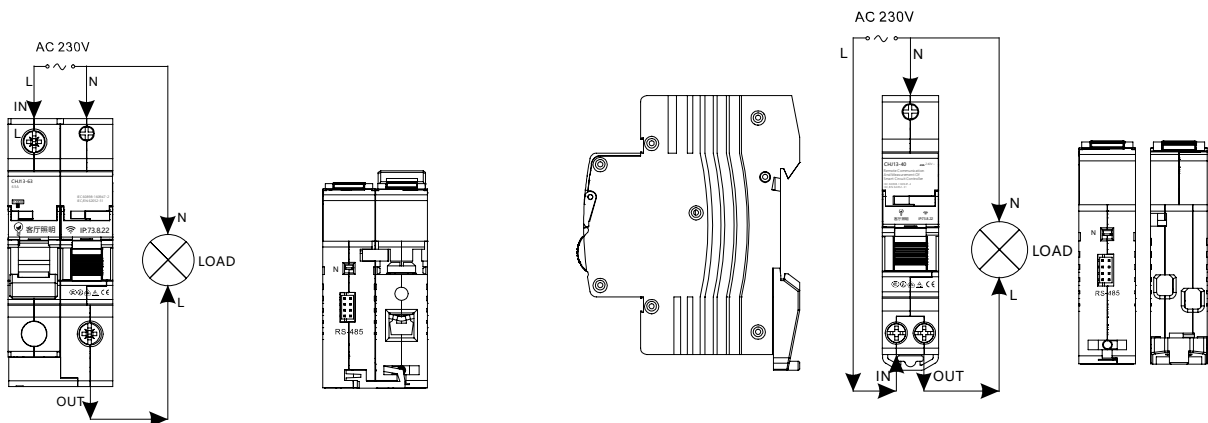
## Remote Communication And Measurement Of Smart Circuit Breaker

### Main technical parameters



- Number of poles 1P
- Rated Current(I<sub>n</sub>) 1、2、3、4、6、10、16、20、25、32、40、50、63A
- Rated Voltage(Un) AC 230(240) V
- Tripping curve B、C、D
- Ultimate short-circuit breaking capacity(I<sub>cn</sub>) 10000A
- Metrical data Voltage、Current、Active power、Active energy
- Metrical accuracy Voltage and current: ±0.5%FS
- Data storage 10 years
- Communication interface RS - 485
- Communication protocol MODBUS RTU/DTL, Extensible WIFI or ZIGBEE mobile communication
- Communication rate can be set up 1200, 2400, 4800, 2400 BPS (1200 by default)
- Operation life Protection parts: 40,000 times ; Perform control: 500,000 times
- Electrical life 20,000 times
- Stand-by power consumption 1W Max.
- Measuring precision 0.5%
- Terminal protection Ip20
- Operating temperature -25°C~+55 °C

### Schematic diagram





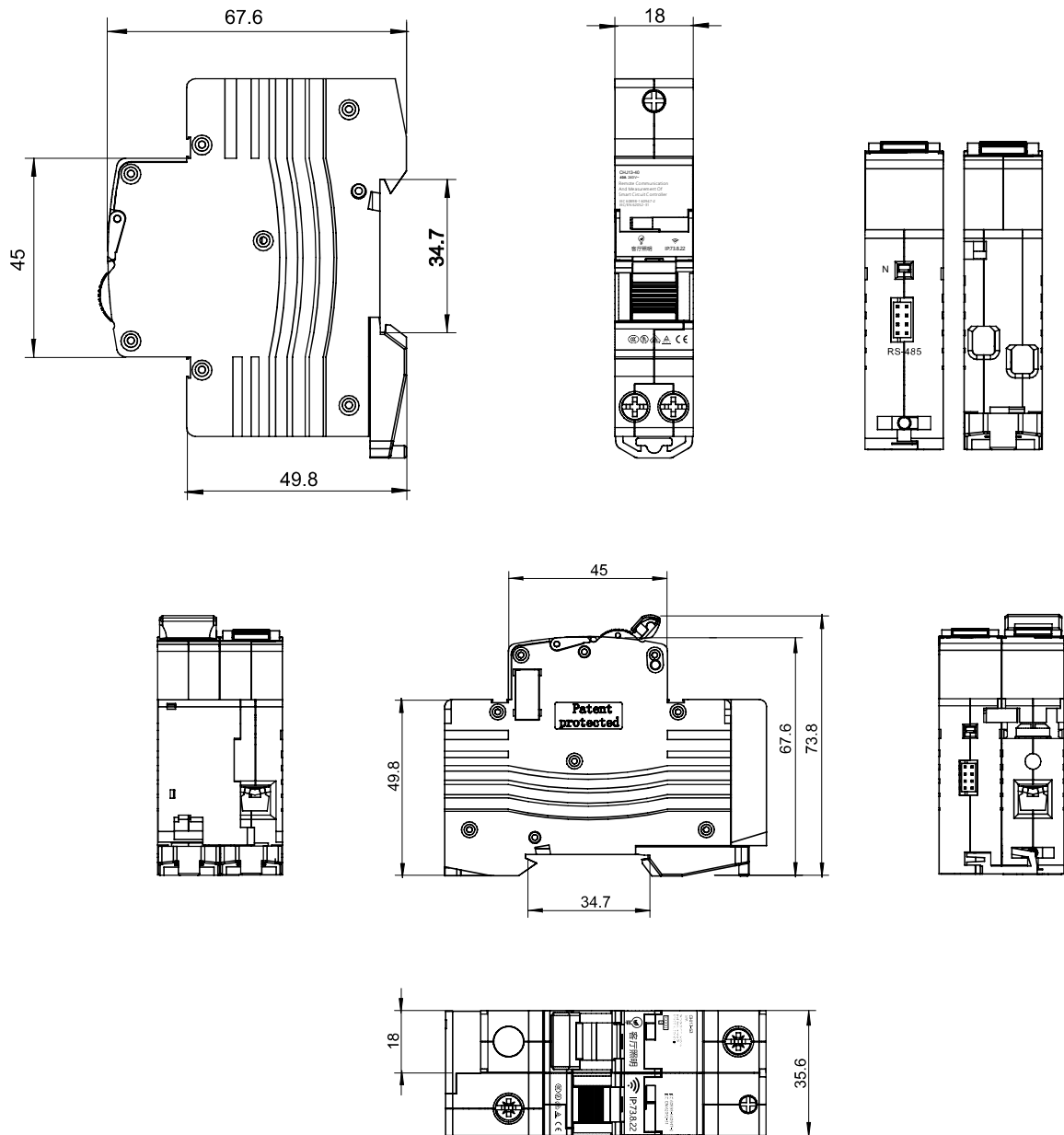
# CHJ13-40/CHJ13-63

Remote Communication And Measurement  
Of Smart Circuit Breaker

## OUTLINE SIZE AND CONNECTION DIAGRAM (mm)

Undimensioned tolerance  
 < 1mm: ±0.2mm  
 1~5mm: ±0.3mm  
 > 5mm: ±0.5mm

Mounting hole size tolerance  
 ±0.4mm





# CHJ13-32M

Remote Communication And Measurement  
Of Smart Circuit Breaker



GB/T 10963.1  
IEC/EN 60898-1

## Main technical parameters

- Number of poles 1P
  - Rated Current(I<sub>n</sub>) 1、2、3、4、6、10、16、20、25、32A
  - Rated Voltage(U<sub>n</sub>) AC 230(240) V
  - Tripping curve B、C、D
  - Ultimate short-circuit breaking capacity(I<sub>cn</sub>) 6000A
  - Metrical data Voltage、 Current、 Active power、 Active energy
  - Metrical accuracy Voltage and current: ±0.5%FS
  - Data storage 10 years
  - Communication interface RS - 485
  - Communication protocol MODBUS RTU/DTL, Extensible WIFI or ZIGBEE mobile communication
  - Communication rate can be set up 1200, 2400, 4800, 2400 BPS (1200 by default)
  - Operation life Protection parts: 40,000 times ; Perform control: 500,000 times
  - Electrical life 20,000 times
  - Stand-by power consumption 1W Max.
  - Measuring precision 0.5%
  - Terminal protection Ip20
  - Operating temperature -25°C~+55 °C
- 
- Circuit short circuit protection + Overload protection
  - Over voltage protection + Under voltage protection
  - Leakage protection + Shock protection
  - Timing switch + Delay switch
  - Automatic connect and cut circuit + Remote control connect and cut circuit
  - Electricity measurement + Electricity charge control
  - Temperature detection + Failure analysis
  - Electrical parameter acquisition
  - Data limited transmission and wireless transmission
  - Combine cloud and APP data analysis
  - Check the operation status of electrical equipment
  - Monitor carbon dioxide emissions
  - Allow software to set protection parameters
  - Energy conservation and emission reduction management is realized through management software

## MCB + Smart Module

Ensure that the security features  
of the respective units are not lost:

The miniature circuit breaker follows  
its own product standard.

The intelligent module conforms to  
its own standard invariable.

Dual protection, multi - protection function.





# CHJ13-32G

## Remote Communication And Measurement Of Smart Circuit Breaker



GB 16917.1  
IEC/EN 61009-1

### Main technical parameters

- Number of poles 1P
- Rated Current(I<sub>n</sub>) 1、2、3、4、6、10、16、20、25、32A
- Rated Voltage(U<sub>n</sub>) AC 230(240) V
- Tripping curve B、C、D
- Rated residual operating current (mA) I<sub>Δn</sub> 10、30、100
- Rated residual non operating current (mA) I<sub>Δn</sub> 0.5I<sub>Δn</sub>
- Mode Electronic
- Residual current characteristics Type:AC, A, B, S
- Ultimate short-circuit breaking capacity(I<sub>cn</sub>) 6000A
- Metrical data Voltage、Current、Active power、Active energy
- Metrical accuracy Voltage and current: ±0.5%FS
- Data storage 10 years
- Communication interface RS - 485
- Communication protocol MODBUS RTU/DTL, Extensible WIFI or ZIGBEE mobile communication
- Communication rate can be set up 1200, 2400, 4800, 2400 BPS (1200 by default)
- Operation life Protection parts: 40,000 times ; Perform control: 500,000 times
- Electrical life 20,000 times
- Stand-by power consumption 1W Max.
- Measuring precision 0.5%
- Terminal protection Ip20
- Operating temperature -25°C~+55 °C
- Circuit short circuit protection + Overload protection
- Over voltage protection + Under voltage protection
- Leakage protection + Shock protection
- Timing switch + Delay switch
- Automatic connect and cut circuit + Remote control connect and cut circuit
- Electricity measurement + Electricity charge control
- Temperature detection + Failure analysis
- Electrical parameter acquisition
- Data limited transmission and wireless transmission
- Combine cloud and APP data analysis
- Check the operation status of electrical equipment
- Monitor carbon dioxide emissions
- Allow software to set protection parameters
- Energy conservation and emission reduction management is realized through management software

### RCBO + Smart Module

Ensure that the security features of the respective units are not lost:

The residual current circuit breaker with overcurrent protection follows its own product standard.

The intelligent module conforms to its own standard invariable.

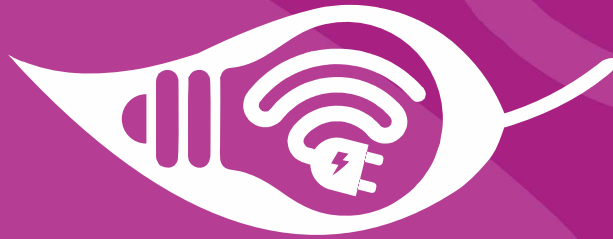
Dual protection, multi - protection function.





SAVE ON ENERGY, STARTS FROM ME !

Gold Supplier Trade Assurance  
[Http://Oldlang.en.Alibaba.com](http://Oldlang.en.Alibaba.com)  
**Allbaba.com**



# OLDLANG

Oldlang Smart Electrical

Gold Supplier Trade Assurance Alipay



Low Carbon



Wireless



Energy Saving

E-mail: [Oldlang\\_sale@163.com](mailto:Oldlang_sale@163.com) <http://Oldlang.en.Alibaba.com> [www.Oldlang.com](http://www.Oldlang.com)  
Hangzhou: Future Science And Technology City / Nanjing: Gaochun Economic development zone

