



LEADING THE RECYCLING ECONOMY,  
INNOVATIVE ENERGY-SAVING EMISSION REDUCTION!



[www.Oldlang.com](http://www.Oldlang.com)   [Oldlang\\_sale@163.com](mailto:Oldlang_sale@163.com)

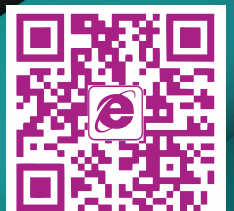


# Oldlang Smart Electrical

LEADING THE RECYCLING ECONOMY   INNOVATIVE ENERGY-SAVING EMISSION REDUCTION!



 **Gold Supplier**    **Trade Assurance**  
[Http://Oldlang.en.Alibaba.com](http://Oldlang.en.Alibaba.com)  
**Alibaba.com**





## About Oldlang Smart Electrical

The company named Oldlang Smart Electrical, which is a modern technology enterprise, committed to innovating energy conservation and emission reduction and leading the circular economy. The products focus on the original, low carbon, energy saving, collecting data, remote control and other functions are the characteristics of Oldlang's Smart electrical products. To enable users to use energy safely, reliably and efficiently is the value idea of Oldlang Smart Electrical. Therefore, the intelligent energy management is not only the inevitable development of the times, but also the direction of the development of the intelligent electrical of Oldlang's. Oldlang Smart Electrical provide wisdom into the city, the intelligent household practical products, improve people's life, improve the earth's environment, insist on sustainable development has always been the belief of Oldlang Smart Electrical.

In Oldlang smart electrical, we are always advocating:

**INNOVATIVE ENERGY-SAVING EMISSION REDUCTION  LEADING THE RECYCLING ECONOMY!**





ISO 9001



ISO 14001



OHSAS 18001



Gold Supplier Trade Assurance

[Http://Oldiang.en.alibaba.com](http://Oldiang.en.alibaba.com)

Alibaba.com

# 113

Series

# Smart Electrical Systems



## Oldiang

Oldiang Smart Electrical

Innovative Energy-Saving Emission Reduction  
Leading The Recycling Economy

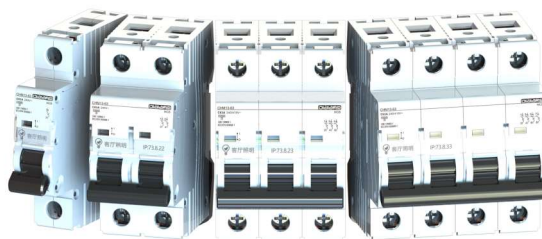
CHM13-32



MCB

**Miniature Circuit Breaker:**  
**Standard:** GB 10963 IEC 60898-1  
**Pole:** 1P+N(18mm)  
**Rated voltage:** AC 230V  
**Rated current:** 1~40A.  
**Tripping curve:** B, C.  
**High short-circuit breaking capacity (Icn):** 6KA.

CHM13-63



MCB

**Miniature Circuit Breaker:**  
**Standard:** GB 14048.2 GB 10963 IEC 60898-1 IEC 60947-2  
**Pole:** 1P(18mm), 1P+N(36mm), 2P(36mm), 3P(54mm), 3P+N(72mm), 4P(72mm)  
**Rated voltage:** AC 230/400V  
**Rated current:** 1, 2, 3, 4, 6, 10, 13, 16, 20, 25, 32, 40, 50, 63A.  
**Tripping curve:** B, C, D.  
**High short-circuit breaking capacity (Icn):** 10000A.

CHM13-125



MCB

**Miniature Circuit Breaker:**  
**Standard:** GB 14048.2 GB 10963 IEC 60898-1 IEC 60947-2  
**Pole:** 1P(27mm), 1P+N(54mm), 2P(54mm), 3P(81mm), 3P+N(108mm), 4P(108mm)  
**Rated voltage:** AC 230/400V  
**Rated current:** 63, 80, 100, 125A.  
**Tripping curve:** B, C, D.  
**High short-circuit breaking capacity (Icn):** 15000A.

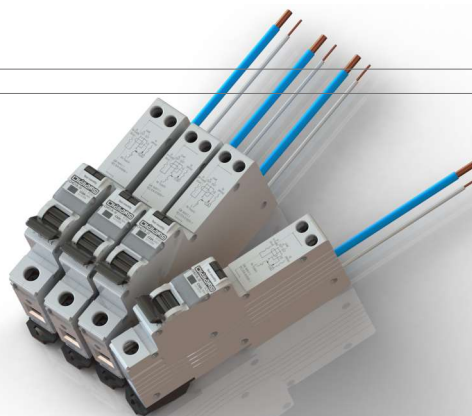
CHG13-32



RCBO

**Residual Current Circuit Breaker With Overcurrent Protection:**  
**Standard:** GB 16917.1 IEC 61009-1  
**Pole:** 1P+N(18mm)  
**Rated voltage:** AC 230V  
**Rated current:** 1~40A.  
**Rated residual operating current  $I_{\Delta n}$ :** 10, 30, 100mA.  
**Rated residual non operating current  $I_{\Delta no}$ :** 0.5 $I_{\Delta n}$ .

CHG13L-32



RCBO

**Tripping curve:** B, C.  
**Type:** AC, A, B, F, S  
**Mode:** Electronic  
**Rated working frequency:** 50/60Hz.  
**High short-circuit breaking capacity (Icn):** 4.5KA.

### CHG13-40

### RCBO



#### Residual Current Circuit Breaker With Overcurrent Protection (RCBO):

**Standard:** GB 16917.1 IEC 61009-1

**Pole:** 1P+N(36mm)

**Rated voltage:** AC 230V

**Rated current:** 1~50A.

**Rated residual operating current  $I_{\Delta n}$ :** 5~500mA.

**Rated residual non operating current  $I_{\Delta no}$ :** 0.5 $I_{\Delta n}$ .

**Tripping curve:** B, C.

**Type:** AC, A, B, F, S

**Mode:** Electronic, Electromagnetic

**Rated working frequency:** 50/60Hz.

**High short-circuit breaking capacity ( $I_{cn}$ ):** 6KA.

### CHL13-63

### RCCB



#### Residual Current Circuit Breaker (RCCB):

**Standard:** GB 16916.1 IEC 61008-1

**Pole:** 2P(36mm), 4P(72mm).

**Rated voltage:** AC 230/400V

**Rated current:** 1~63A.

**Rated residual operating current  $I_{\Delta n}$ :** 6, 10, 16, 30, 100, 300, 500mA.

**Rated residual non operating current  $I_{\Delta no}$ :** 0.5 $I_{\Delta n}$ .

**Type:** AC, A, B, F, S

**Mode:** Electronic, Electromagnetic

**Rated working frequency:** 50/60Hz.

**High short-circuit breaking capacity ( $I_{cn}$ ):** 10KA.

### CHL13-125

### RCCB



#### Residual Current Circuit Breaker (RCCB):

**Standard:** GB 16916.1 IEC 61008-1

**Pole:** 2P(36mm), 4P(72mm).

**Rated voltage:** AC 230/400V

**Rated current:** 63, 80, 100, 125A.

**Rated residual operating current  $I_{\Delta n}$ :** 6, 10, 16, 30, 100, 300, 500mA.

**Rated residual non operating current  $I_{\Delta no}$ :** 0.5 $I_{\Delta n}$ .

**Type:** AC, A, B, F, S

**Mode:** Electronic, Electromagnetic

**Rated working frequency:** 50/60Hz.

**High short-circuit breaking capacity ( $I_{cn}$ ):** 10KA.

### CHS13

### Signal Lamp

#### Signal lamp:

**Rated voltage( $U_e$ ):** AC 230V

**Rated frequency:** 50/60Hz

**Max power:** 0.6W(LED), 1.2W(Neon)

**Colour:** Red, Green, Yellow

**Illumination:** LED, Neon bulb

**Connection terminal:** pillar terminal with clamp

**Connection capacity:** rigid conductor 10mm<sup>2</sup>

**Service duration:** 30,000(LED),

15,000(Neon bulb) hours

**Installation:** On symmetrical DIN rail 35.5mm



**CHJ13-40**

**Smart Circuit Breaker**



**Remote Communication And Measurement Of Smart Circuit Breaker:**  
 Poles: 1P  
 Rated Current(In): 1~40A  
 Rated Voltage(Un): AC 230(240) V  
 Ultimate short-circuit breaking capacity(Icn): 10000A  
 Metrical data: Voltage、 Current、 Active power、 Active energy  
 Metrical accuracy: Voltage and current: ±0.5%FS  
 Communication interface: RS485  
 Communication protocol: MODBUS RTU/DTL, Extensible WIFI or ZIGBEE mobile communication  
 Communication rate can be set up: 1200, 2400, 4800, 2400 BPS (1200 by default)

**CHJ13-63**

**Smart Circuit Breaker**

MCB+Smart module



**Remote Communication And Measurement Of Smart Circuit Breaker:**  
 Poles: 1P  
 Rated Current(In): 1~63A  
 Rated Voltage(Un): AC 230(240) V  
 Tripping curve: B、 C、 D  
 Ultimate short-circuit breaking capacity(Icn): 10000A  
 Metrical data: Voltage、 Current、 Active power、 Active energy  
 Metrical accuracy: Voltage and current: ±0.5%FS  
 Data storage: 10 years  
 Communication interface: RS485  
 Communication protocol: MODBUS RTU/DTL, Extensible WIFI or ZIGBEE mobile communication  
 Communication rate can be set up: 1200, 2400, 4800, 2400 BPS (1200 by default)

**CHJ13-32M**

**Smart Circuit Breaker**

MCB+Smart module



**Remote Communication And Measurement Of Smart Circuit Breaker:**  
 Poles: 1P  
 Rated Current(In): 1~40A  
 Rated Voltage(Un): AC 230(240) V  
 Tripping curve: B、 C、 D  
 Ultimate short-circuit breaking capacity(Icn): 6000A  
 Metrical data: Voltage、 Current、 Active power、 Active energy  
 Metrical accuracy: Voltage and current: ±0.5%FS  
 Communication interface: RS485  
 Communication protocol: MODBUS RTU/DTL, Extensible WIFI or ZIGBEE mobile communication  
 Communication rate can be set up: 1200, 2400, 4800, 2400 BPS (1200 by default)

**CHJ13-32G**

**Smart Circuit Breaker**

RCBO+Smart module



**Remote Communication And Measurement Of Smart Circuit Breaker:**  
 Poles: 1P  
 Rated Current(In): 1~40A  
 Rated Voltage(Un): AC 230(240) V  
 Tripping curve: B、 C、 D  
 Rated residual operating current  $I\Delta n$ : 10, 30, 100mA.  
 Rated residual non operating current  $I\Delta no$ : 0.5 $I\Delta n$ .  
 Type: AC, A, B, F, S  
 Mode: Electronic  
 Rated working frequency: 50/60Hz.  
 Ultimate short-circuit breaking capacity(Icn): 10000A  
 Metrical data: Voltage、 Current、 Active power、 Active energy  
 Metrical accuracy: Voltage and current: ±0.5%FS  
 Data storage: 10 years  
 Communication interface: RS485  
 Communication protocol: MODBUS RTU/DTL, Extensible WIFI or ZIGBEE mobile communication  
 Communication rate can be set up: 1200, 2400, 4800, 2400 BPS (1200 by default)



ISO 9001



ISO 14001



OHSAS 18001



Gold Supplier Trade Assurance  
[Http://Oldlang.en.alibaba.com](http://Oldlang.en.alibaba.com)  
 Alibaba.com

**CHJ13-40G****Smart Circuit Breaker**

RCBO+Smart module

**Remote Communication And Measurement Of Smart Circuit Breaker:**

Poles: 1P

Rated Current(In): 1~63A

Rated Voltage(Un): AC 230(240) V

Tripping curve: B、C、D

Rated residual operating current  $I\Delta n$ : 10, 30, 100mA.Rated residual non operating current  $I\Delta no$ : 0.5I $\Delta n$ .

Type: AC, A, B, F, S

Mode: Electronic

Rated working frequency: 50/60Hz.

Ultimate short-circuit breaking capacity(In): 10000A

Metrical data: Voltage、Current、Active power、Active energy

Metrical accuracy: Voltage and current:  $\pm 0.5\%$ FS

Data storage: 10 years

Communication interface: RS485

Communication protocol: MODBUS RTU/DTL, Extensible WIFI or ZIGBEE mobile communication

Communication rate can be set up: 1200, 2400, 4800, 2400 BPS (1200 by default)

**CHR13-36****ARD****Automatic Reclosing Device (ARD):**

Poles: 36mm

Rated Voltage(Un): AC 230(240) V

Standby power: 0.5W

Trip time: Trips $\leq 0.2s$  Reclose $\leq 0.3s$  (time delay excluded)

Reclose time: Adjustable 0, 1, 2, 3, 4, 5, 6, 7, 8, 9 times

Time delay: Adjustable 0, 10, 20, 30, 45, 60, 90, 120, 150, 180 second

Portfolio model: ARD+MCB, ARD+RCCB, ARD+RCBO, ARD+Smart Circuit Breaker

**CHW13-36****Wireless Server****Wireless server (Data concentrator):**

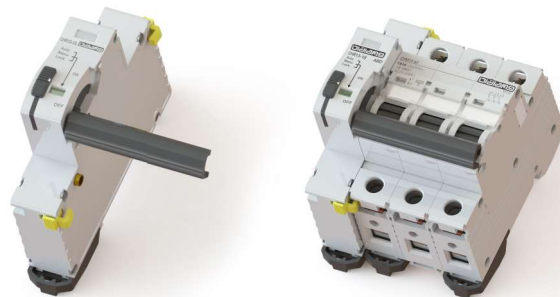
Rated Voltage(Un): AC 80~260 V or DC 5~12V

Data entry mode: Rs485 or Mbus

Wireless communication mode:

GPRS, 2.4G, 3G, 4G, 5G, ZigBee, Bluetooth, WiFi, LoRa, Carrier, Etc.

(A product can only choose one mode of communication)

**CHR13-18****ARD****Automatic Reclosing Device (ARD):**

Poles: 18mm

Rated Voltage(Un): AC 230(240) V

Standby power: 0.5W

Trip time: Trips $\leq 0.2s$  Reclose $\leq 0.3s$  (time delay excluded)

Reclose time: 1st.10s, 2nd.60s, 3th.300s, 4th.locked

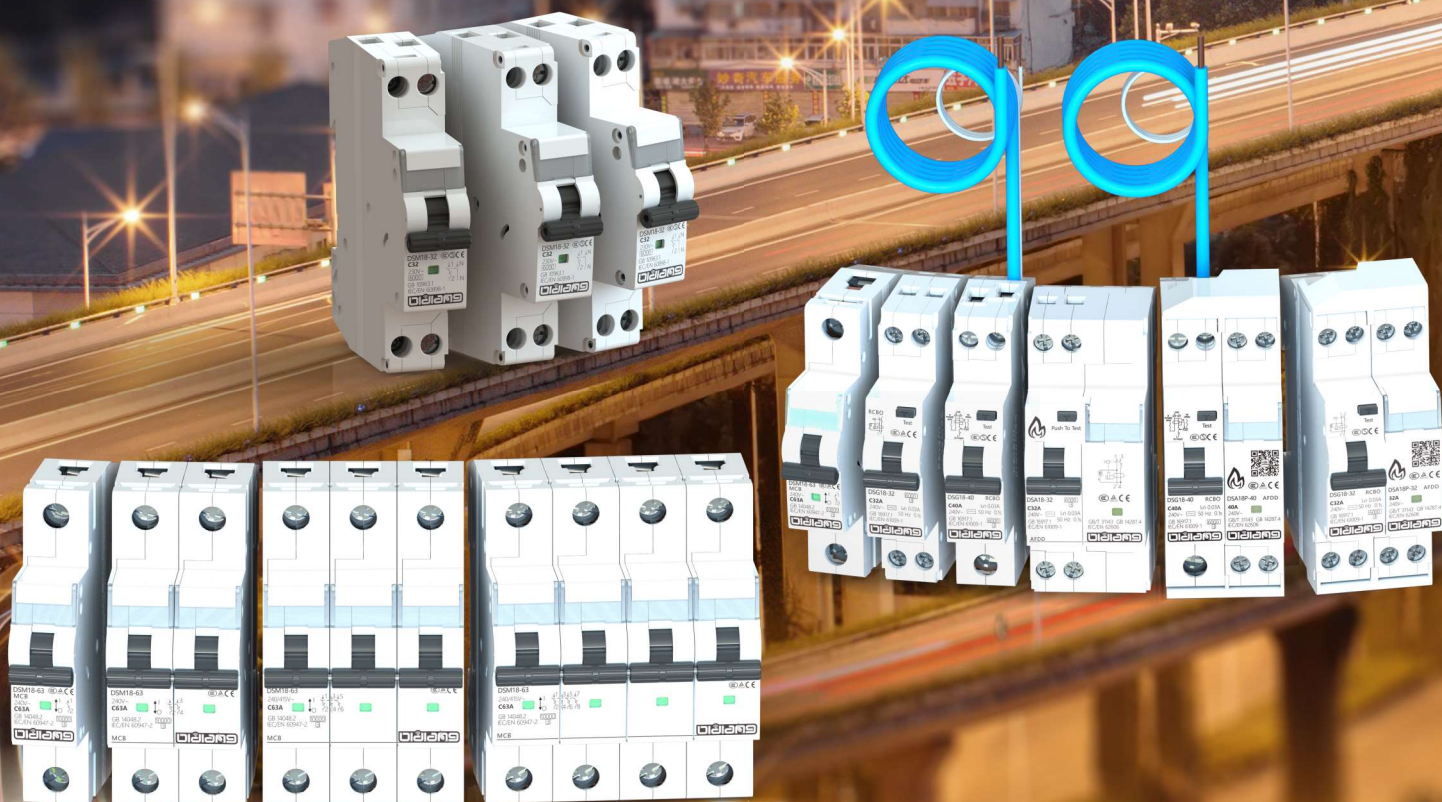
Portfolio model: ARD+MCB, ARD+RCCB, ARD+RCBO, ARD+Smart Circuit Breaker



Gold Supplier Trade Assurance  
[Http://Oldlang.en.alibaba.com](http://Oldlang.en.alibaba.com)  
**Alibaba.com**

# 118

## Series Circuit Breakers



Oldlang Smart Electrical

Innovative Energy-Saving Emission Reduction  
 Leading The Recycling Economy

DSM18-32



MCB

**Miniature Circuit Breaker:**  
**Standard:** GB 10963 IEC 60898-1  
**Pole:** 1P+N(18mm)  
**Rated voltage:** AC 230V  
**Rated current:** 1~40A.  
**Tripping curve:** B, C.  
**High short-circuit breaking capacity (Icn):** 6KA.

DSM18-63



MCB

**Miniature Circuit Breaker:**  
**Standard:** GB 14048.2 GB 10963 IEC 60898-1 IEC 60947-2  
**Pole:** 1P(18mm), 1P+N(36mm), 2P(36mm), 3P(54mm), 3P+N(72mm), 4P(72mm)  
**Rated voltage:** AC 230/400V  
**Rated current:** 1, 2, 3, 4, 6, 10, 13, 16, 20, 25, 32, 40, 50, 63A.  
**Tripping curve:** B, C, D.  
**High short-circuit breaking capacity (Icn):** 10000A.

CHL15-63



RCCB

**Residual Current Circuit Breaker (RCCB):**  
**Standard:** GB 16916.1 IEC 61008-1  
**Pole:** 2P(36mm), 4P(72mm).  
**Rated voltage:** AC 230/400V  
**Rated current:** 1~63A.  
**Rated residual operating current  $I\Delta n$ :** 6, 10, 16, 30, 100, 300, 500mA.  
**Rated residual non operating current  $I\Delta no$ :** 0.5 $I\Delta n$ .  
**Type:** AC, A  
**Mode:** Electronic, Electromagnetic  
**Rated working frequency:** 50/60Hz.  
**High short-circuit breaking capacity (Icn):** 6KA.

DSG18-32



RCBO

**Residual Current Circuit Breaker With Overcurrent Protection:**  
**Standard:** GB 16917.1 IEC 61009-1  
**Pole:** 1P+N(18mm)  
**Rated voltage:** AC 230V  
**Rated current:** 1~40A.  
**Rated residual operating current  $I\Delta n$ :** 10, 30, 100mA.  
**Rated residual non operating current  $I\Delta no$ :** 0.5 $I\Delta n$ .

DSG18L-32



RCBO

**Tripping curve:** B, C.  
**Type:** AC, A, B, F, S  
**Mode:** Electronic  
**Rated working frequency:** 50/60Hz.  
**High short-circuit breaking capacity (Icn):** 6KA.



Gold Supplier Trade Assurance  
[Http://Oldlang.en.alibaba.com](http://Oldlang.en.alibaba.com)  
**Alibaba.com**

# Release

Series

# Permanent Magnet Relay (PMR)



Oldlang Smart Electrical

Innovative Energy-Saving Emission Reduction  
 Leading The Recycling Economy





ISO 9001



ISO 14001



OHSAS 18001



Gold Supplier

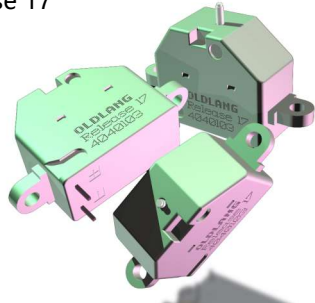


Trade Assurance

[Http://Oldlang.en.alibaba.com](http://Oldlang.en.alibaba.com)

Alibaba.com

Release 17



Release 14



Release 11

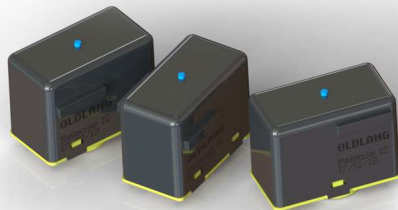


PMR

Release 15



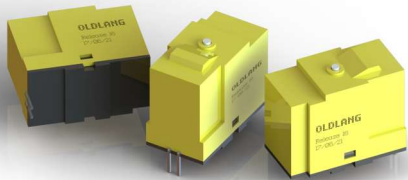
Release 12



Release 13



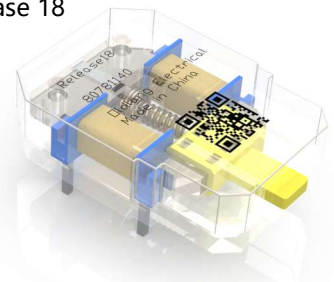
Release 16



Release 10



Release 18

**Permanent Magnet Relay (PMR)  
For RCCB & RCBO & RCD & ELCB**

Weight: 5.5gr

Linear trigger path s of plunger: 2.1mm

Minimum free trigger path of plunger required: 0.2mm

Minimum resetting path: 2.1mm

Minimum plunger force (dynamic stabilized condition) at s = 0.2 mm: 500mN

Minimum plunger force (dynamic stabilized condition) at s = 2.0 mm: 280mN

Minimum static reset force: 1200mN

Maximum static reset force: 2000mN

Maximum reset energy W: 6mJ

Minimum shock resistance at Smin: 600m/s

Maximum external magnetic field Hpeak at Smin: 4.5KA/m

Magnetic field for permanent change of current Hpeak at Smin: 100KA/m

Ambient operating temperature: -25 ~ 100°C

Ambient storage temperature: -35 ~ 100°C

Temperature coefficient :I0(v0=20°C), typical -0.4%/Kelvin

Climatic resistivity: GB 16916/7 EN61008/9

**Warning:** The tripping system of Release (plunger, armature, yoke pole) must be in a closed state during the process of magnetization or demagnetization. The plunger must be pushed down with an external force of 900mN < F < 2000mN.

Due to the external force, tripping and possible damages are prevented during the process of magnetization or demagnetization.



ISO 9001



ISO 14001



OHSAS 18001



Gold Supplier Trade Assurance

[Http://Oldlang.en.alibaba.com](http://Oldlang.en.alibaba.com)

Alibaba.com

# Control of electrical



**Oldlang**

Oldlang Smart Electrical

Innovative Energy-Saving Emission Reduction  
Leading The Recycling Economy

CJC15

Contactors



CJC16

Contactors



Contactors For Household And Similar Purposes:

Rated voltage (Ue): 2P 250 V AC, 4P 400 V AC

Frequency: 50Hz

Electrical life: 100,000 times

The maximum number of switches per day: 100

Insulation voltage (Ui): 500 V AC

Class of pollution: 2

Rated impulse withstand voltage Uimp (Uimp) : 2.5kV(4kV@12/24/48 V AC)

Level of protection Contactor ontology: IP20

(IEC 60529) Install in the distribution box: IP40

Operating temperature: -5°C~+60°C (When the contactor is installed in the distribution box, t's two sides of it must be split apart to help heat the heat)

Storage temperature: -40°C~+70°C

The wet and heat resistance (IEC 60068-1): 2 class (The temperature of 55°C, Relative humidity is 95%)

ELSV conforms to the 12/24/48 V AC version

Product control conforms to the requirements of SELV

MV+MN



MV+MN



Automatic reset overvoltage & undervoltage and Time delay protector:

Number of poles: 2P、 4P

Rated voltage: AC 230/400V

Rated current: 32~63A

Working frequency: 50Hz

Overvoltage trip(L-N): 275>>VAC

Overvoltage trip time: 3~10s(275V), 100~200ms(400V)

Overvoltage recovery(L-N): 253VAC

Undervoltage trip(L-N): 55~160VAC

Undervoltage trip time: 600ms~1.5s

Undervoltage recovery(L-N): 195VAC

Automatic recovery of forced delay: 30±5s

Electrical life: 8000 times

Level of protection(IEC 60529)

Nonumenon: Ip20

Install in distribution box: Ip40

Working with ambient temperature: -5°C~+55°C

Storage ambient temperature: -40°C~+80°C

Wiring and installation:

Wiring mode: Below into the line, From the above output line

The product is installed on the main switch outlet side



ISO 9001



ISO 14001



OHSAS 18001

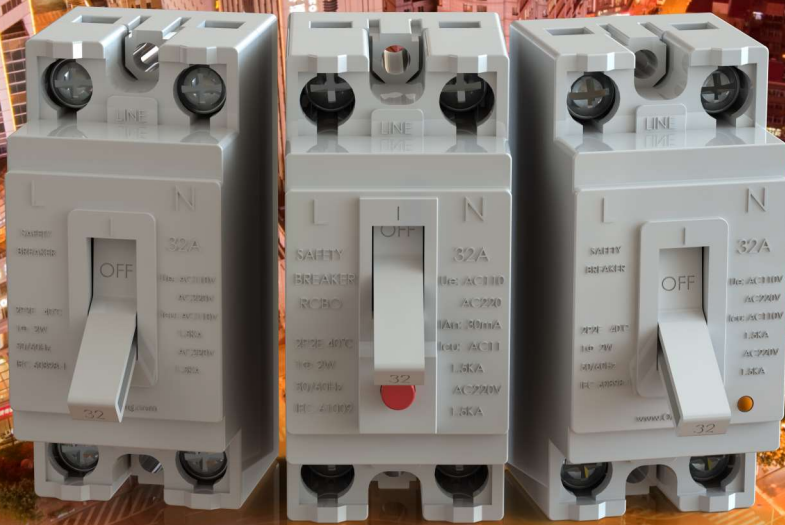


Gold Supplier Trade Assurance

[Http://Oldlang.en.alibaba.com](http://Oldlang.en.alibaba.com)

Alibaba.com

# 50 Series SAFETY BREAKER



## Oldlang

Oldlang Smart Electrical

Innovative Energy-Saving Emission Reduction  
Leading The Recycling Economy

CHM50-32

**Safety Breaker**



**Safety Breaker (MCB) :**

**Standard:** GB 10963 IEC 60898-1  
**Rated voltage (Ue):** 110 V AC, 220 V AC  
**Rated current (In):** 1~32A.  
**Frequency:** 50/60Hz  
**High short-circuit breaking capacity (Icn):** 1.5KA.

CHM50-32 (Indicator light)

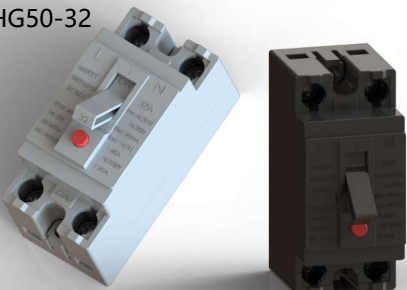
**Safety Breaker**



**Safety Breaker (MCB) - (Indicator light):**

**Standard:** GB 10963 IEC 60898-1  
**Rated voltage (Ue):** 110 V AC, 220 V AC  
**Rated current (In):** 1~32A.  
**Frequency:** 50/60Hz  
**High short-circuit breaking capacity (Icn):** 1.5KA.

CHG50-32



**Safety Breaker**

**Safety Breaker (RCBO):**

**Standard:** GB 16917 IEC 61009-1  
**Rated voltage (Ue):** 110 V AC, 220 V AC  
**Rated current (In):** 1~32A.  
**Rated residual operating current (I<sub>Δn</sub>):** 6, 10, 16, 30, 100, 300, 500mA.  
**Rated residual non operating current (I<sub>Δno</sub>):** 0.5I<sub>Δn</sub>.  
**Type:** AC, A  
**Mode:** Electronic  
**Frequency:** 50/60Hz  
**High short-circuit breaking capacity (Icn):** 1.5KA.





SAVE ON ENERGY, STARTS FROM ME !

Gold Supplier Trade Assurance  
[Http://Oldlang.en.Alibaba.com](http://Oldlang.en.Alibaba.com)  
**Allbaba.com**



# OLDLANG

Oldlang Smart Electrical

Gold Supplier Trade Assurance Alipay



Low Carbon



Wireless



Energy Saving

E-mail: [Oldlang\\_sale@163.com](mailto:Oldlang_sale@163.com) <http://Oldlang.en.Alibaba.com> [www.Oldlang.com](http://www.Oldlang.com)  
Hangzhou: Future Science And Technology City / Nanjing: Gaochun Economic development zone

