



Save on energy, starts from me



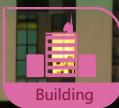
LEADING THE INNOVATIVE ENERGY-SAVING RECYCLING ECONOMY, EMISSION REDUCTION!



Factory



Hospital



Building



Community



School



Household



Low Carbon



Wireless



Energy Saving

# CHJ13-40 CHJ13-63

## Remote Communication And Measurement Of Smart Circuit Breaker



Connect the cloud data  
Integration of intelligent system  
Intelligent terminal APP



RS485  
Remote control

Metering Remote Wireless Smart

4G 3G WiFi Bluetooth  
Wireless communication  
and remote control



Oidlang Smart Electrical

Tel: +86-571-5729-8888 Fax: +86-571-5729-8980 E-mail: Oidlang\_sir@163.com Http://www.Oidlang.com Add: No.2293, South Jinhai Road, Zhenjiang 201515, P.R.China



# CHJ13-40 CHJ13-63

Remote Communication  
And Measurement Of  
Smart Circuit Breaker



## Features

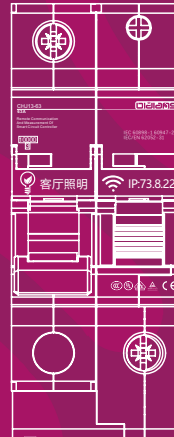
- Overload, short-circuit current, energy leakage (optional) protection.
- Timing control of switching on or off.
- Remote control of switching on or off, the supported network connections include: WIFI/GPRS/GPS/ZIGBEE/KNX.
- Remote measurement and monitoring, to monitor and measure the energy usage of electrical equipment.
- Self diagnostic (PC/Smart phone).
- Reading database (PC/Smart phone).
- MCB + MLR (MCB: Miniature circuit breaker, MLR: Magnetic Latching Relay).

## Standard

- MCB: IEC 60898-1 60947-2
- MLR: IEC/EN 62052-31

## Usage

CHJ13 is multi-function circuit breaker, which is applicable to circuit in smart home, street lamp control system and other places which need wireless remote control. It is rated voltage is 230/400V~, rated current is 63A, frequency 50Hz/60Hz, breaking capacity 10KA with functions such as overload protection, shortcircuit protection, earth leakage protection. This product is used to turn on/off electrical appliances, electrical machinery, equipment in long distance connected by WIFI/GPRS/GPS/ZIGBEE/KNX or RS485 cable connection, and also is applied to measure electricity consumption.



## Construction features

This product is composed of high breaking capacity miniature circuit breaker and permanent magnet controller for executive control function. It is suitable for a variety of wireless network connections and cable connection with external interface signals, and also can be extended other functions by modular combination.

# CHJ13-40 CHJ13-63

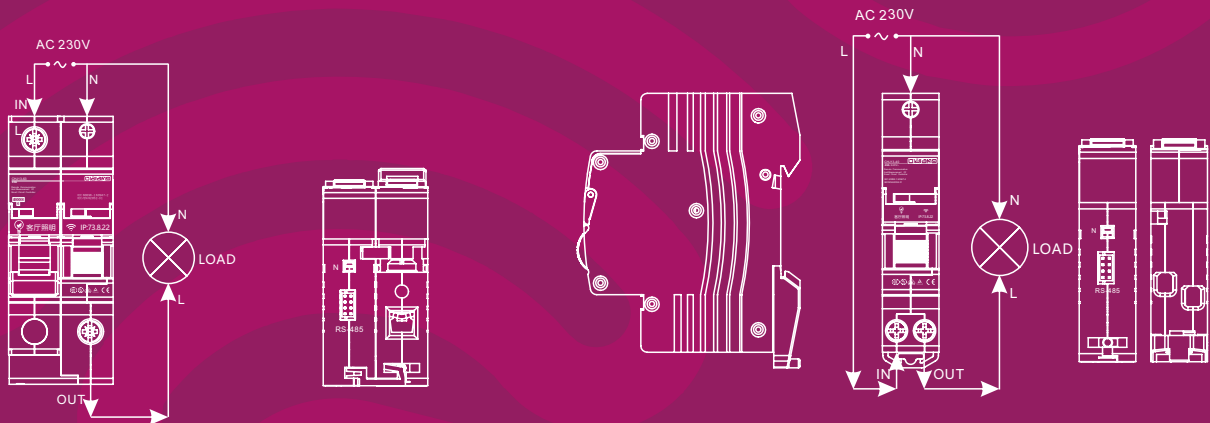
Remote Communication  
And Measurement Of  
Smart Circuit Breaker



## Main technical parameters

- Number of poles 1P
- Rated Current(I<sub>n</sub>) 1、2、3、4、6、10、16、20、25、32、40、50、63A
- Rated Voltage(U<sub>n</sub>) AC 230(240) V
- Tripping curve B、C、D
- Ultimate short-circuit breaking capacity(I<sub>cn</sub>) 10000A
- Metrical data Voltage、Current、Active power、Active energy
- Metrical accuracy Voltage and current: ±0.5%FS
- Data storage 10 years
- Communication interface RS - 485
- Communication protocol MODBUS RTU/DTL, Extensible WIFI or ZIGBEE mobile communication
- Communication rate can be set up 1200, 2400, 4800, 2400 BPS (1200 by default)
- Operation life Protection parts: 40,000 times ; Perform control: 500,000 times
- Electrical life 20,000 times
- Stand-by power consumption 1W Max.
- Measuring precision 0.5%
- Terminal protection Ip20
- Operating temperature -25°C~+55 °C

## Schematic diagram



# CHJ13-40 CHJ13-63

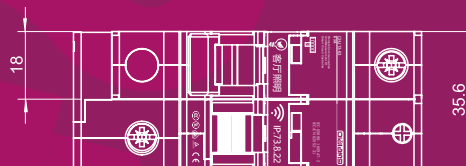
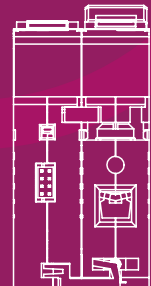
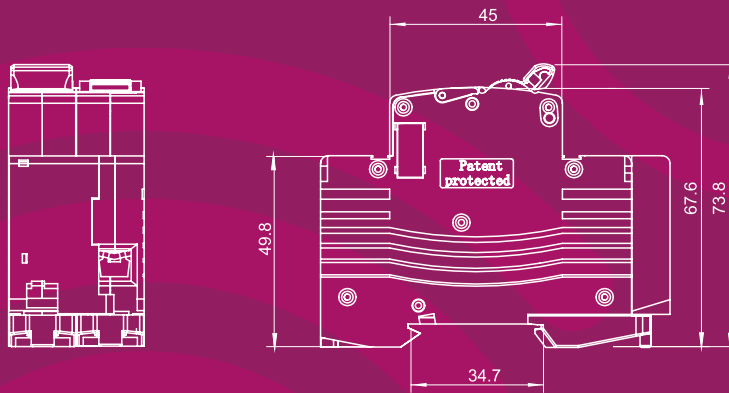
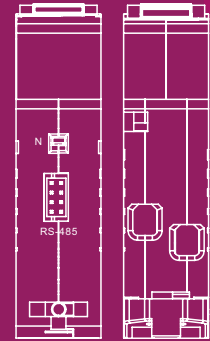
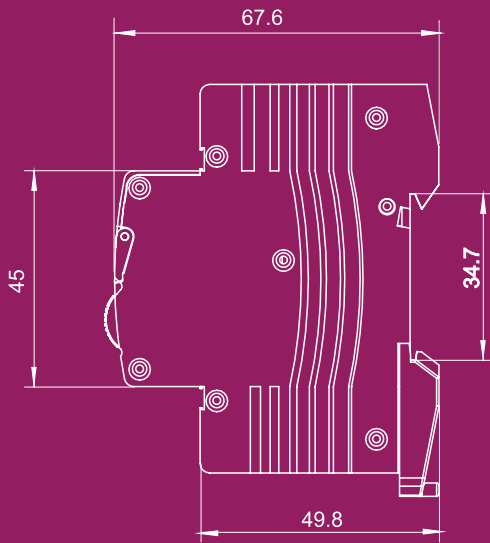
Remote Communication  
And Measurement Of  
Smart Circuit Breaker



## OUTLINE SIZE AND CONNECTION DIAGRAM (mm)

Undimensioned tolerance  
< 1mm: ±0.2mm  
1~5mm: ±0.3mm  
> 5mm: ±0.5mm

Mounting hole size tolerance  
±0.4mm





**OLDLANG**

Oldlang Smart Electrical



Low Carbon



Wireless



Energy Saving

Tel: +86-571-5729-4888 Fax: +86-571-5729-4580 E-mail: Oldlang\_sale@163.com http://www.Oldlang.com Add: No.2239, South Jinsh Road, Zhenjiang, 201515, P.R.China

