



Save on energy, starts from me.

LEADING THE INNOVATIVE ENERGY-SAVING RECYCLING ECONOMY, EMISSION REDUCTION!



Factory



Hospital



Building



Community



School



Household



Low Carbon



Wireless



Energy Saving

CJC16

Contactors For Household And Similar Purposes

Un:220~250V~
In:1~63A
50Hz



EN 61095
IEC 1095
GB17885



Oldiang Smart Electrical

Tel: +86-25-5725-8888 Fax: +86-25-5725-6993 E-mail: Oldiang_sales@163.com http://www.Oldiang.com Add: Gulun Dadao, Daoxian Qu, Ningbo City, Jiangsu 211100, P.R.China



CJC16

Contactors For Household And Similar Purposes

Un:220~250V~
In:1~63A
50Hz



Product Features

- CJC16 Contactors For Household And Similar Purposes, It is a contactor without manual operation.
- The contactor can be used for most applications.
- The contactor can extend auxiliary control, protection, and instructing.
- The contactor can be used for remote control:
 - Lighting, heating, ventilation, curtain, public hot water.
 - Mechanical ventilation system, etc.
- Comply with RoHS requirements for environmental protection.

Structure

- The contactor with a rated current greater than or equal to 25A can be used in combination with its control attachment, the product's Piling system can effectively guarantee electrical and mechanical connection.
- The ac connector's insulation terminals IP20.
- The operation process noise is minimized.
- The product has a special indication of mechanical contact position.
- The contactor is compatible with all the Oldlang's products and all types of lighting.

CJC16 Contactors-50Hz

Type	Rated Current (In)		Control Voltage (V AC)(50Hz)	Contact	Power Dissipation		Maximum Power	Breadth	
	AC7a	AC7b			Keep	Actuation			
	25A	8.5A	230~240	2NO	2.7VA	9.2VA	1.2W	2×9=18	
			230~240	2NC	2.7VA	9.2VA	1.2W	2×9=18	
			230~240	1NO+1NC	2.7VA	9.2VA	1.2W	2×9=18	
	40A	15A	220~240	2NO	4.6VA	34VA	1.6W	4×9=36	
			220~240	2NC	4.6VA	34VA	1.6W	4×9=36	
			220~240	1NO+1NC	4.6VA	34VA	1.6W	4×9=36	
	63A	20A	220~240	2NO	4.6VA	34VA	1.6W	4×9=36	
			220~240	2NC	4.6VA	34VA	1.6W	4×9=36	
			220~240	1NO+1NC	4.6VA	34VA	1.6W	4×9=36	
	4P	25A	8.5A	220~240	4NO	4.6VA	34VA	1.6W	4×9=36
				220~240	4NC	4.6VA	34VA	1.6W	4×9=36
		40A	15A	220~240	4NO	6.5VA	53VA	2.1W	6×9=54
220~240				4NC	6.5VA	53VA	2.1W	6×9=54	
63A		20A	220~240	4NO	6.5VA	53VA	2.1W	6×9=54	
			220~240	4NC	6.5VA	53VA	2.1W	6×9=54	

CJC16

Contactors For Household
And Similar Purposes

Un:220~250V~
In:1~63A
50Hz



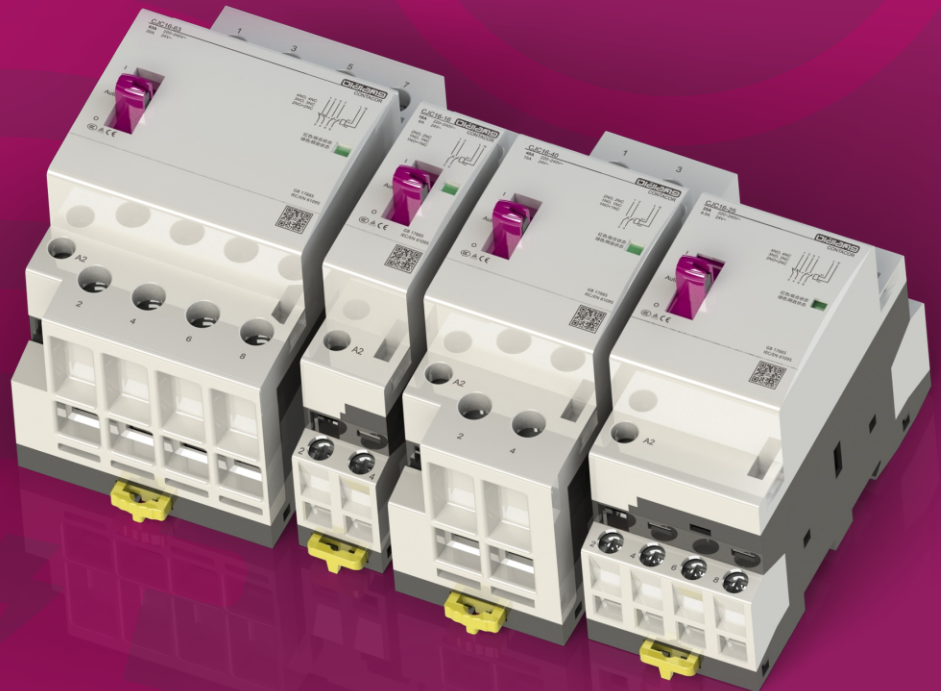
Oldlang
Oldlang Smart Electrical

Technical parameters

Main Circuit		
Rated voltage (Ue)	2P	250 V AC
	4P	400 V AC
Frequency		50Hz
Life (O-C)		
Electrical life		100,000 times
The maximum number of switches per day		100
Additional features		
Insulation voltage (Ui)		500 V AC
Class of pollution		2
Rated impulse withstand voltage Uimp (Uimp)		2.5kV(4kV@12/24/48 V AC)
Level of protection	Contactor ontology	IP20
(IEC 60529)	Install in the distribution box	IP40
Operating temperature		-5°C~+60°C
(When the contactor is installed in the distribution box, t's two sides of it must be split apart to help heat the heat)		
Storage temperature		-40°C~+70°C
The wet and heat resistance (IEC 60068-1)		2 class (The temperature of 55°C , Relative humidity is 95%)

ELSV conforms to the 12/24/48 V AC version

Product control conforms to the requirements of SELV



CJC16

Contactors For Household
And Similar Purposes

Un:220~250V~
In:1~63A
50Hz

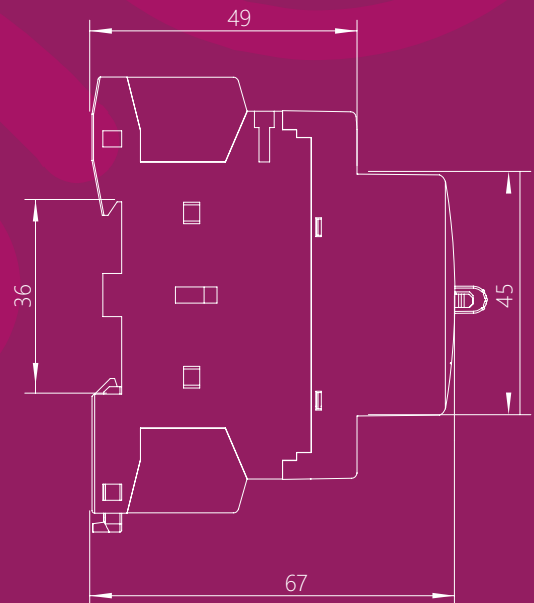
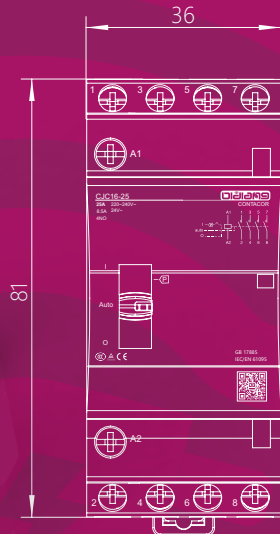
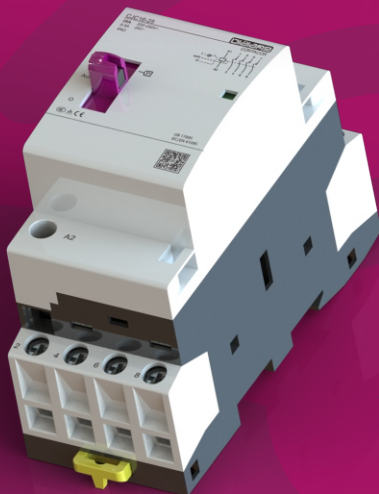
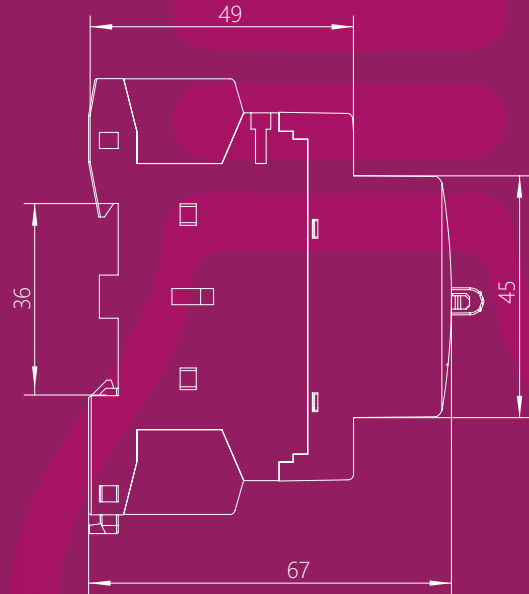
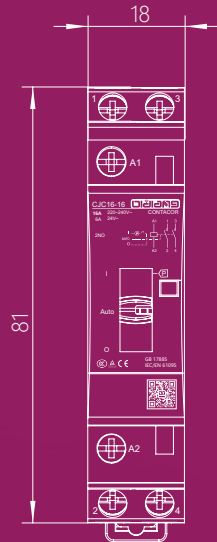
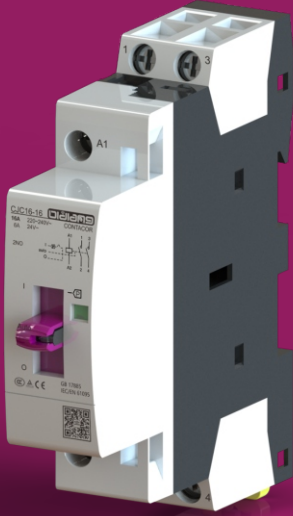


Oldlang
Oldlang Smart Electrical

OUTLINE SIZE AND CONNECTION DIAGRAM (mm)

Undimensioned tolerance
< 1mm:±0.2mm
1~5mm:±0.3mm
> 5mm:±0.5mm

Mounting hole size tolerance
±0.4mm





OLDLANG

Oldlang Smart Electrical



Low Carbon



Wireless



Energy Saving

Tel: +86-25-5730 4888 Fax: +86-25-5735 4550 Add: Gulian Dadao Gaochun Qu Nanjing City Jiangsu 211315 P.R.China

E-mail: Oldlang_sae@163.com http://www.Oldlang.com

