



Save on energy, starts from me.

LEADING THE INNOVATIVE ENERGY-SAVING RECYCLING ECONOMY EMISSION REDUCTION!



Factory



Hospital



Building



Community



School



Household



Low Carbon



Wireless



Energy Saving

CHC9001

Din Rail Mounted Single Phase Active Energy (KWh) Meter For Submeter Solutions

220V
10(60)A
50Hz
1200imp/KWh



GB/T 17215.321-2008
IEC 62052-11 2003
IEC62053-21 2003
IEC62053-31 1998
DIN46277/3
EN50022



Oldiang Smart Electrical Co., Ltd.

Tel: +86-571-5729-8888 Fax: +86-571-5729-8980 E-mail: Oldiang_sir@163.com Http://www.Oldiang.com Auk1No.2239, South Jiang Road, Zhenjiang 201515, P.R.China



CHC9001

Din Rail Mounted Single Phase Active Energy (KWh) Meter For Submeter Solutions

220V 10(60)A
50Hz 1200imp/KWh



FEATURES

- Small size yet provides all those functions a modern smart meter has to offer. DDSU9001 is an ideal digital sub meter solution for property owners and apartment management companies that need to calculate energy consumption of their clients / tenants separately;
- Measurement of Electric Energy: Measuring and recording the total consumption of Active Electric Energy, including forward active energy and reverse active energy, and calculate both as forward active energy;
- Big LCD Display: 5+1 digits display. Display total power consumption in KWh;
- Loop Display: Voltage, current, frequency, active power;
- Data safety: Data will not lost in the event of power cut;
- Communication: The meter has a RS-485 port, supports communication with server through ModBUS RTU / 97 / 07 or other protocol.

SPECIFICATIONS

Model No.	CHC9001 Din Rail Mounted Single Phase Active Energy (KWh) Meter
Rated Voltage	220-230 V
Rated Current	5 (80) A
Frequency	50Hz-60Hz
Starting Current	0.4%IB
Power	≤ 1W/7VA
Connection Mode	Direct Connect
Operational temperature	-20---+55°C
Communication Method	RS485
Accuracy	Class 1
Display	LCD 5 + 1
Average Humidity	≤ 75%
Pulse	1000imp/kWh
Weight	
Dimension Standards	DIN46277/3 EN50022 IEC 62052-11 2003, IEC62053-21 2003, IEC62053-31 1998

Communication baud rate : 1200bps、9600bps ;
Communication mode : RS485、Infrared (Customizable:WiFi、ZigBee) ;
Communication protocol : MODBUS、DL/T 645-1997、DL/T 645-2007;

Operating temperature : -25°C~+55°C。

Expand functionality

- Overload alarm;
- Remote pull switch;
- ZigBee communication.

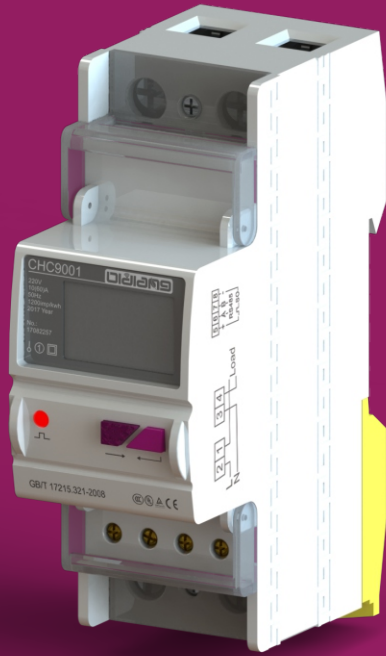
CHC9001

Din Rail Mounted Single Phase Active Energy (KWh) Meter For Submeter Solutions

220V 10(60)A
50Hz 1200imp/KWh



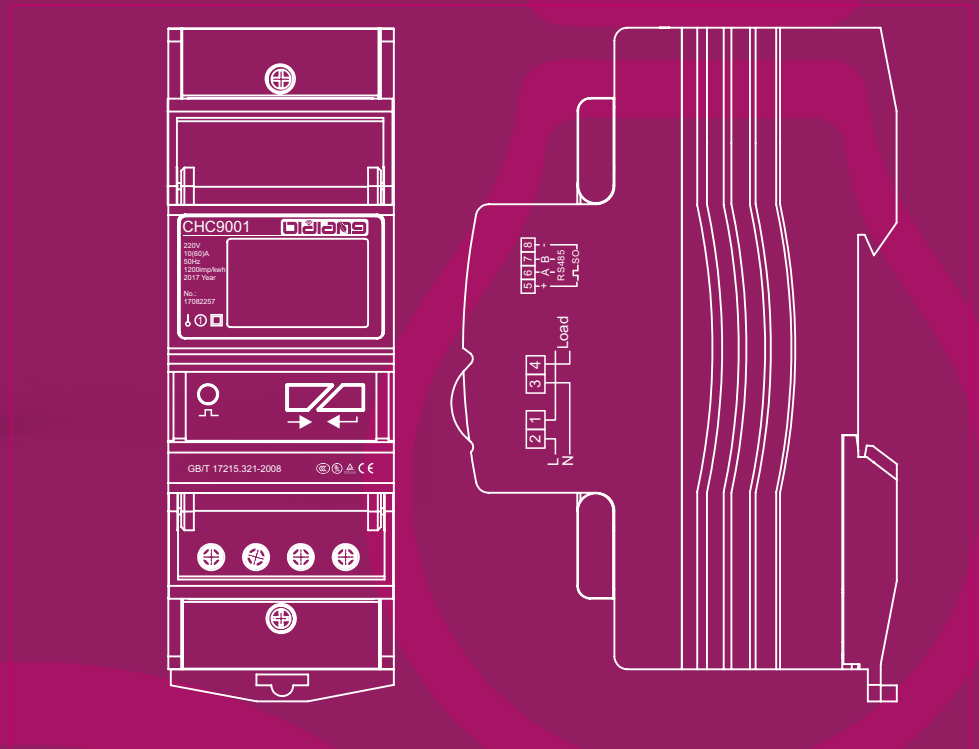
Oldlang
Oldlang Smart Electrical Co., Ltd.



APPEARANCE

Color: Gray;
Printing position: According to the installation requirements literally up.

Reference diagram:



STORAGE CONDITIONS

Temperature : 0°C~40°C
Humidity : 20%~80% RH

Environment :

- Product storage environment there can be no corrosive gas,
- Storage of products should avoid direct sunlight.

WIRING DIAGRAM



CHC9001

Din Rail Mounted Single Phase Active Energy (KWh) Meter For Submeter Solutions

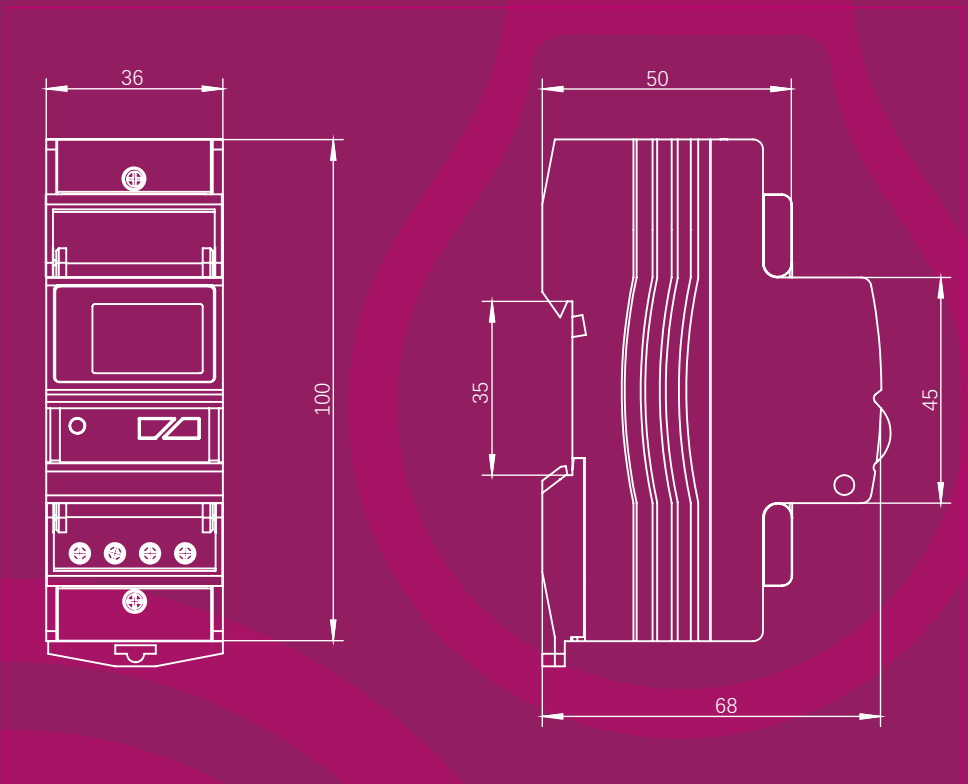
220V 10(60)A
50Hz 1200imp/KWh



OUTLINE SIZE AND CONNECTION DIAGRAM (mm)

Undimensioned tolerance
< 1mm:±0.2mm
1~5mm:±0.3mm
> 5mm:±0.5mm

Mounting hole size tolerance
±0.4mm



MATTERS NEEDING ATTENTION

Special told that matters :

Special requirements (such as: in strong magnetic, explosive and extreme high and low temperature more harsh environments, such as using, ultrasensitive actions, ultra low power, low resistance, high pressure, low temperature rise and other requirements, etc.) shall be negotiated in advance, communication before placing an order, otherwise in accordance with the requirements of regular supply.



OLDLANG
Oldlang Smart Electrical Co., Ltd.



Low Carbon



Wireless



Energy Saving

Tel: +86-571-5729 4888 Fax: +86-571-5729 4580 E-mail: Oldlang_sale@163.com Http://www.Oldlang.com Add: No.2239, South 3rdrd Road, Zhenjiang 201515, P.R.China

